



*Top Of*  
*The Bald*

**Wolf Laurel  
Property Owners Association  
Newsletter  
Spring 2022 Edition**

Brought to you by the  
WLPOA BOARD OF DIRECTORS  
and the WLPOA STAFF



# *Top of the Bald - Table of Contents*

**Click on Listing to navigate to page.**

(Page 1 of 3)

<a href="#"><u>WL Property Owners Association (WLPOA) Board &amp; Staff.....</u></a>	<a href="#"><u>5</u></a>
<a href="#"><u>President's Notes .....</u></a>	<a href="#"><u>6</u></a>
<a href="#"><u>Editor's Notes .....</u></a>	<a href="#"><u>7</u></a>
<a href="#"><u>WLPOA Board Meeting Notes .....</u></a>	<a href="#"><u>8</u></a>
<a href="#"><u>WLPOA and Village Club Programs .....</u></a>	<a href="#"><u>9-11</u></a>
<a href="#"><u>What's In A Name? .....</u></a>	<a href="#"><u>12</u></a>
<a href="#"><u>WL Event Calendars .....</u></a>	<a href="#"><u>13-15</u></a>
<a href="#"><u>WLRMS - President's Message .....</u></a>	<a href="#"><u>16-17</u></a>
<a href="#"><u>WLRMS - Fire Mitigation Assessment Program.....</u></a>	<a href="#"><u>18</u></a>
<a href="#"><u>WLRMS - Wildfire Preparedness.....</u></a>	<a href="#"><u>19-20</u></a>
<a href="#"><u>WLRMS - Preserve WL's Night Sky .....</u></a>	<a href="#"><u>21</u></a>
<a href="#"><u>WL Country Club .....</u></a>	<a href="#"><u>22-24</u></a>
<a href="#"><u>Hospice Fern Sale .....</u></a>	<a href="#"><u>25</u></a>
<a href="#"><u>Blasts From The Past .....</u></a>	<a href="#"><u>26</u></a>
<a href="#"><u>Wolf Pack Hiking.....</u></a>	<a href="#"><u>27-29</u></a>
<a href="#"><u>WLPOA Library .....</u></a>	<a href="#"><u>30-31</u></a>
<a href="#"><u>WL Historical Society .....</u></a>	<a href="#"><u>32-33</u></a>



# Top of the Bald - Table of Contents

**Click on Listing to navigate to page.**

(Page 2 of 3)

[WL Wildlife .....34](#)

[STPAL.....35](#)

[Carolina Climbers Coalition .....36](#)

[13th Annual Golf Tournament.....37](#)

[SOWF.....38](#)

[Madison County Arts Council .....39-41](#)

[Ebbs Chapel School .....42](#)

[Outdoor Craft Fair .....43](#)

[Madison County Visitor Center .....44](#)

[Carolina Mountains Literary Festival .....45](#)

[WL Village Club Facebook Page .....46](#)

[WLPOA/Village Club Website .....47-48](#)

[WLRMS WL Map .....49](#)

[List of Advertisers .....50](#)

[Advertisements .....51-63](#)

[TOB Advertising Information.....64](#)



# *Top of the Bald - Table of Contents*

**Click on a listing to navigate to a page or a website.**

(Page 3 of 3)

## **Advertisers**

**Click listing to navigate to page**

**Asheville Home Repair 51**

**Precision Restoration Services 52**

**Deb d'Aquin, Real Estate Advisor 53**

**Affordable Tree Care 54**

**Mike Whitt Maintenance 55**

**A Treasure in the Appalachian Sky 55**

**Blue Ridge Shine 56**

**Akut-Abuv, Professional Painting Service 57**

**Glorious Mayhem Handyman 58**

**Boundless Body & Massage 59**

**Hicks Real Estate Group 60**

**Black Bear Realty, Inc 61**

**Wolf Mountain Realty 62**

**Mountain Laurel Realty 63**

**TOB Advertising Information 64**

*Thank You! to the TOB Advertisers*

*Have a great Season!*

# Wolf Laurel Property Owners Association (WLPOA)

## **WLPOA Board of Directors:**

- John Brackett - President
- Carl Larrabee - Vice President
- Theodore Meyer - Secretary
- Jamie Conrad - Treasurer
- Steve Wilcox
- Laura Conard
- Bob Hicks
- Leigh Ann Roseberry
- Earlene Shofi - Immediate Past President



**WLPOA:**  
 91 Village Lane  
 Mars Hill, NC 28754  
 828-689-9229

[BY-LAWS OF THE WOLF LAUREL  
 PROPERTY OWNERS ASSOCIATION, INC](#)

Article II. # 4. "To promote and/or arrange social, recreational, and educational activities of members."

**WLPOA Director:** Liz Benson - [liz@wolflaurelpoa.com](mailto:liz@wolflaurelpoa.com), 828-689-9229

**Village Club Manager:** Carol Jones - [carol@wolflaurelpoa.com](mailto:carol@wolflaurelpoa.com), 828-689-4089

TOB Editor and Publisher  
 Larry Veatch  
[larryv8@gmail.com](mailto:larryv8@gmail.com)

**Website:** [www.wolflaurelpoa.com](http://www.wolflaurelpoa.com)

A digital version or a printed version of this newsletter can be obtained via email to [larryv8@gmail.com](mailto:larryv8@gmail.com).

**The WLPOA office frequently receives questions about WLRMS; Any WLRMS questions should be addressed to WLRMS at 828-680-9162, or [wlrads@wolflaurelrms.com](mailto:wlrads@wolflaurelrms.com), or [wsecurity@wolflaurelrms.com](mailto:wsecurity@wolflaurelrms.com).**

Editorial Committee	
Rick Zinter	Lynn Cagney
Betsy Browne	Rich Ashley
Ron Metcalf	Bob Hicks

[Enjoy your spring!](#)

## President's Notes



Welcome back to Wolf Laurel! We are in the middle of April and eagerly awaiting the summer season. In a few weeks many activities will begin and before you know it, we will be in the middle of summer and enjoying all the activities on the mountain. The POA and Village Club staff and your POA Board are prepared for this new season and we look forward to seeing everyone enjoying the activities in the village.

We are also ready to celebrate the new package facility. Hopefully, gone are the days of trying to find your package in a very full cabin. This newly remodeled facility will give us much needed room for sorting packages but also more room for parking. This is a continued benefit that comes with your POA membership. If you are not a POA member, there will be a package facility fee to allow access to the new package room. This fee is designed to offset the cost of maintenance of the facility and the personnel cost for staff to sort and organize the packages. If you are not a POA member, please contact the POA office for more information on how you can utilize this new facility. If you are a POA member, information will be coming shortly as we finalize the move. On behalf of the WLPOA Board, I want to thank Steve Wilcox for serving as our project manager for this remodel effort. He has dedicated many hours to this project so please join me in saying Thank You when you see him in the community.

Your POA and Village Club continue to grow and add services and activities to the long list of things to do in the village. The team has another full summer planned with time for networking, playing your favorite sport, or finding a new book to read from the library. If we can enhance our service to you as a POA or Village Club member, please let us know. We are always looking for improvement ideas. And, if you are not a POA or Village Club member, now is a great time to join!

John Brackett



## Editor's Notes



I always have a list, and usually more than one, of Things To Do - "TTD". My TTD's include the usual mundane things, but also important and fun things as well (e.g., TOB, Tai Chi, Yoga, Pickleball).

If you are on the Mt or will be back up later, there are a lot of things to do in Wolf Laurel that might deserve some consideration for your TTD.

In May, several of the Village Club activities start: Friday and Monday socials, Fitness Classes, Water Fitness, and Pickleball, and the Village Club Pool opens ([see pages 9-11](#)). There is the opportunity to learn more about wildfire prevention (May 7th is **Wildfire Community Preparedness Day** and May is **Wildfire Awareness Month**. ([learn more on pages 18-21](#)).

Another local activity includes a presentation "**Exploring Our Forgotten Past: Fort San Juan**"; and see what "**First Fridays**" in Mars Hill are all about, both provided by the Madison County Visitor Center. Or check out the **Outdoor Craft Fair** in Barnardsville. At the Wolf Laurel Country Club you can choose from a list that includes the **Hospice Benefit Fern Sale**, the "Taco 'Bout It" luncheon for a talk on the "**Walk in the Woods**" program, or attend their Memorial Day program later this month. They also have programs by the NCFS on **Fire Mitigation** and another entitled "**Time to Go Fishing**." ([pages 22-25](#)). There is also a new restaurant at the ski lodge - The Lodge Pizzeria.

Your June TTD can include the startup of other Village Club activities including Tai Chi, Tennis, Samba, and the first Book Club meeting, and the Wolf Laurel Historical Society (WLHS) will host a presentation entitled "**The Bald Mountain Tourist Society**." ([pages 32-33](#)) The Wolf Pack Hiking groups offer opportunities to join a friendly group for weekly hikes around the area ([pages 27-29](#)). In addition, there is the **Bluff Mt Festival** in Hot Springs and a **Kruger Brothers** concert at the EBBS Chapel ([pages 39-42](#)).

In July there will of course be **Independence Day** celebrations at the WLCC and the VC, the annual Kids Camp, and more Wolf Pack Hikes, as well as the annual **Hospice and SOWF Benefit Golf events** at the WLCC ([pages 24 & 37](#)), where there will also be a luncheon with the co-authors Jim Klumpp & Warren Johnson of "**A Treasure in the Appalachian Sky, A History of Wolf Laurel**". There will be another concert by **Josh Goforth** at the EBBS Chapel ([p.40](#)), and a presentation by the WLHS - "**Mountain Moonshine**" ([page 32](#)).

If reading is to be on your TTD there is a lot at the WLPOA Library and there are two books suggested by the WLHS that elaborate the history of our community: **Upper Laurel and Her People, chronicling the original families of Upper Laurel**; and **A Treasure in the Appalachian Sky: A History of Wolf Laurel in Madison and Yancey Counties, North Carolina**. The WLHS has many more suggestions on their website ([page 33](#)).

Wolf Laurel - a grand place to be, "A Great Escape"! Relax, Read, Volunteer, Exercise, Play....

What's going to be on your TTD list this season?

([See calendars pages 13-15](#))

Larry Veatch, TOB Editor

# WLPOA Board Meetings Notes

8

## March

**RMS Liaison** – Pave Big Bald Rd in 2023; Mt Bike Park and pizza restaurant new at ski slope; NCFS fire prevention assessments available; ARB updating fire pit, etc. guidelines.

**Financials** – Receipts of dues has been good, overall financial status is good; some CD's are maturing.

**Memberships** – Two new POA members, one new VC member, dues are being received.

**Facilities** – Considering a new pool cover and new heating source; playground fence and bridges need mending

**Beautification** – Prepping for spring, need mulch and fertilizer

**Website** – Redesigned; need new email service and new co-owner, mobile design updated

**TOB** – Winter edition done, print version being ordered; spring edition contributions due by 4/15, to be out by 5/1

## April

**WLRMS Liaison** - The first weekend in May WLRMS will host a Community Wildfire Preparedness event. WLRMS is setting up a different kind of wildfire risk assessment, one that evaluates the community's infrastructure. In the new WLRMS portal we are asking that any property serving as a dedicated vacation rental be identified as "Tenant Occupied" and owners identify the agent handling the rental. WLRMS is in the process of making field visits to the land owned by RMS, considering factors such as essential to road maintenance or security concerns, beneficial greenspace, wildfire mitigation areas (fire breaks), and possible well development.

**Financials** - The financial sheet looks very good. Recent utility costs have been high and the problem is being evaluated.

**Village Club** - The social event last month was well attended. A motion passed to spend up to \$800 to purchase a ping pong table and other equipment.

**Membership** - For April we have two new Village Club members and a prospective new member.

**Facilities** - A replacement hot water heater has been purchased and will be installed for the shower by the swimming pool and sink at the pavilion. The bridges that go across the stream and the locust fencing at the playground needs some attention for safety reasons before the season starts. New signage for the new package facility, along with directions to the Ski Lodge restaurant and the new mountain bike trails will be done shortly. For the new signage a name for the package facility needs to be finalized.

**Website / Newsletter** - The site has been redesigned and the host for the site domain has been moved to the current website management service. The Top of the Bald spring edition will be out May 1st.

**Old Business** - The motel site needs the following before it can open; floors need to be cleaned, a lock is needed for the door, and shelving needs to be installed. We hope to have a name for the facility before the next meeting. We need to fill two vacancies on the Board.

**New Business** - Board members are needed to serve as liaisons to the RMS Board at its meetings.



## 2022 Village Club Programs

**Water Fitness**  
**Fitness Class**  
**Pickleball**  
**Yoga**  
**Tai Chi**  
**Tennis**  
**Samba**  
**Book Club**

**Kids Camp**  
**Dining Out with Friends**  
**Friday Night Socials**  
**Monday Night Potlucks**  
**Swimming Pool**  
**Holiday Events!**

Community center hours: May are 9-6, Office hours 9-4

June 9-7, Office hours 9-4

July through Oct 9-8, Office Hours 9-4



The Village Club is in the process of preparing the events for 2022. We have a couple of events on the calendar already and will be adding more. Stay Tuned!!!

**Monday Night Potlucks** start May 2nd at the Village Club Pavilion at 6 (If weather permits) by the fireplace. Bring a dish to share and BYOB; The Village Club will provide paper products & utensils.

**Friday Nighter socials** will start May 6th, also at the Village Club Pavilion at 6 (If weather permits) by the fireplace. Bring an appetizer to share and mingle with friends; The Village Club will provide paper products, utensils & soft drinks (BYOB). At the first Friday Nighter of each month live music will be provided.

The **Village Club pool** will open Memorial Day Weekend - Saturday May 28<sup>th</sup> (pending pool inspection) and will be open daily from 10 to 7 through June, and starting in July the pool will be open 10 until 8. All Village Club members and guests/renters of VC members are required to sign in at the gate next to the pool.

(continued)



# 2022 Village Club Programs

(continued)

## Holiday Events!

An **Independence Day** celebration is set for Saturday July 2<sup>nd</sup> starting around 6 with commercial-grade fireworks (by PyroTech) at 9. Festivities include the Super 60's Band, Spacewalk blow up slide, bounce house for kids, and snow cones & popcorn. The event is open to all residents; tickets will go on sale in June. Stay tuned for more information closer to the time of the event.

**Kids Camp** is set for July 4<sup>th</sup> (Monday) through July 8<sup>th</sup> (Friday) 9 until 3. The cost of camp is \$250.00 per camper, ages 6-12. **KIDS CAMP IS FULL**, please call to be put on the waiting list, Village Club members only. Please contact [carol@wolflaurelpoa.com](mailto:carol@wolflaurelpoa.com) for more information.



A **Labor Day BBQ** is scheduled for Sept 4th (Sunday) at 4 with live music. Tickets will go on sale in August for the event. Greg Smith will be cooking up some delicious BBQ. The Village Club will provide baked beans, slaw, dessert & drinks.

**Other events are being planned for 2022 Season. Updates to follow!**



# 2022 Village Club Programs

(continued)

## Also to Continue!

**Cooking Classes** with Michaelene Sanders is Back!!! Starting **May 26th**. Please see the link below for more information regarding the sign up for these amazing classes. Classes are reserved for limited seating. Class is \$75.00 pre-paid for reservation to Michaelene Sanders at [mros725@gmail.com](mailto:mros725@gmail.com) or text 843-870-6770. There is a separate PDF attached to this group email regarding the cooking classes: [https://drive.google.com/file/d/17dBnLVbeH0b4DsPzyKcN4GY1MQx2ear6/view?usp=drive\\_web](https://drive.google.com/file/d/17dBnLVbeH0b4DsPzyKcN4GY1MQx2ear6/view?usp=drive_web)

**Yoga** with John Shoemaker via Zoom (ongoing, year round): Mondays & Fridays at 9. Each class will include restorative and yin yoga (long static poses) and active yoga (dynamic poses followed by short static poses). Standing, balancing, kneeling, sitting, and lying down poses will be practiced. John is a 500-hour certified yoga teacher through Yoga Alliance. He completed his training at Asheville Yoga Center. Contact John via email <mailto:johnhshoemaker@gmail.com> for more info.

**Fitness Class** with Mary Lou Woodiwiss – Classes start **June 2nd** and will be held at 9 am on Mondays & Thursdays. Classes will be held in “The Barn” (lower entrance of the Community Center) or, depending the size of the group, on the hardcourt (next to the pickleball courts). “TONE, TIGHTEN & BALANCE” classes are designed to make you more functional in your daily life. We will work on improving range of motion, working every major muscle group to improve strength, mobility, posture, balance and maybe even your golf swing. Please bring an exercise mat, water, and weights. For more information contact Mary Lou Woodiwiss, an ACE certified Group Fitness Instructor at 772-321-3288 or [vbwoody1@hotmail.com](mailto:vbwoody1@hotmail.com).

**Water Fitness** with Leigh Ann Roseberry; starting **June 2nd**, and occurring on Tuesdays & Thursdays at 1. All equipment is provided. Contact Leigh Ann via email for more info <mailto:eagles21@att.net>

**Tai Chi** - Classes have been cancelled for the season.

**Pickleball** – League play will resume **June 1st** (weather permitting) Wednesdays and Fridays at 10 and on Sundays at 2. Ladies play Mondays at 10:30. If interested in learning this great sport, contact the Village Club office at 828-689-4089 for more information. If you are a Village Club member and want to play at other times with your family or group, contact the Village staff and they will open-up the courts for you. For play during May contact [larryv8@gmail.com](mailto:larryv8@gmail.com), 828-359-0071.

**Tennis** – Starts **June 2nd** and occurs on Mondays & Thursdays at 10. All levels of players are welcome. Contact the Village Club Community Center for more information 828-689-4089 ([carol@wolflaurelpoa.com](mailto:carol@wolflaurelpoa.com)).

**Samba** - Every Friday at 1 in the Community Center Board room starting **June 3rd**. Contact Linda Mullins for more info at <mailto:mrsdepp826@gmail.com> or Text 706-362-7812.

**Book Club** - Starts on **June 16th** and is lead by Karen Gerry. Meetings are held every month on the 3rd Thursday at 2:30 in the Village Club Pavilion. Contact Karen at <mailto:kgerry48@aol.com> for more information.

**Horseshoes** - The pits are available anytime.

## *“What’s in a name...”*

### **The WLPOA Board has a Request**

The POA members and other residents will soon have the use of a new facility, thanks to Steve Wilcox and the rest of the board members. It is likely that this new facility will initially only provide an improved package delivery and pickup location. It also has the potential to become a hub of POA activity - including space for meetings, classes, and offices, and for recreational activity, a picnic area, etc.

What will be the new name for the “old motel” - the new WLPOA facility? It has yet to be decided, so you have an opportunity to make suggestions.

The POA board is requesting for you  
to offer a suggestion for a name for this facility.

Whatever we call it, hopefully that name will reflect the importance this facility will have in our community for years to come.

Some suggestions have been made, but a decision will be made soon in response to those suggestions and to new ones.

Please send your suggestions to Liz Benson at [liz@wolflaurelpoa.com](mailto:liz@wolflaurelpoa.com)



For printable versions of the calendars, email the editor at [larryv8@gmail.com](mailto:larryv8@gmail.com).

# May

## Wildfire Awareness Month

Sun	Mon	Tue	Wed	Thu	Fri	Sat
1	2 <i>Monday Socials Start at VC</i>	3 *	4	5	6 ** <i>Friday Socials Start at VC</i>	7 *** <i>Wildfire Com- munity Pre- paredness Day</i>
8 <i>Mother's Day</i>	9	10	11	12	13 <i>POA Bd Meets</i>	14
15	16	17	18	19 <i>Fern Sale Orders - WLCC</i>	20 <i>RMS Bd Meets</i>	21
22	23	24 <i>Taco 'Bout it at WLCC</i>	25	26 <i>Cook- ing Classes Start; Fern Sale Pick ups at WLCC</i>	27	28 <i>VC Pool Opens</i>
29	30 <i>Mem. Day Prog. at WLCC</i>	31 <i>VC Water Fitness Classes Start</i>	* 3rd <i>Fort San Juan at Mad. Co. Visitor Cntr</i>	** 6th <i>First Fridays in Mars Hill</i>	*** 7th <i>Outdoor Craft Fair in Barnardsville</i>	

# June

Sun

Mon

Tue

Wed

Thu

Fri

Sat

			1 <i>Pickleball Starts at VC</i>	2 <i>Fitness, Water Fitness &amp; Tennis Start at VC; NCFs "Fire Mitigation" at WLCC</i>	3 <i>Samba Starts at VC; "Time to Go Fishing" at WLCC</i>	4
5	6	7 <i>Wolf Pack Hike</i>	8	9 <i>Cooking Class</i>	10 <i>POA Bd Meets</i>	11 Bluff Mt Festival in Hot Springs
12	13	14 <i>Wolf Pack Hike, Flag Day</i>	15	16 <i>Book Club at VC</i>	17 <i>RMS Bd Meets</i>	18
19 <i>Father's Day;</i> Kruger Brothers at EBBS	20	21 <i>Wolf Pack Hike</i>	22 <i>"The Bald Mountain Tourist Society" by WLHS *</i>	23	24	25
26	27	28 <i>Wolf Pack Hike</i>	29	30	* <i>WL Historical Society at VC Pavilion</i>	

# July

Sun	Mon	Tue	Wed	Thu	Fri	Sat
					1	2 <i>Indep. Day -VC &amp; WLCC</i>
3	4 <i>Kids Camp Starts at VC</i>	5 <i>Kids Camp</i>	6 <i>Kids Camp</i>	7 <i>Kids Camp</i>	8 <i>POA Bd Meets; Kids Camp; *</i>	9
10	11	12 <i>Wolf Pack Hike</i>	13	14	15	16 <i>Annual Hospice Event at WLCC</i>
17	18 <i>Cooking Class</i>	19 <i>Wolf Pack Hike</i>	20	21 <i>Book Club at VC</i>	22 <i>RMS Bd Meets</i>	23
24	25	26 <i>Wolf Pack Hike</i>	27	28	29	30
31					* <i>"Treasure"</i> at Wolf Laurel Historical Society	

# Wolf Laurel Road Maintenance & Security

## Resident Owned Since 2012

On the final day of 2012 the developer of Wolf Laurel transferred to the community its residual rights and obligations, and Wolf Laurel Road Maintenance and Security Homeowners Association, Inc. assumed the role it holds today as the homeowners association for the community. As we approach our 10th anniversary it is appropriate to reflect on the significance of the transition to a resident-owned community.

The interests of a developer and property owners coincide for many years, but at some point, and on some level their interests diverge in meaningful ways. Both may want a vibrant community, but their vision of what those words mean, how to achieve the goal, and how to measure success will differ drastically. One of the earliest demands made by owners frustrated by the increasingly diverging goals was an owner representative on the board of directors to be the voice of the community. Today, all of the voices on the WLRMS board are property owners, and all pledge to represent all owners in the Wolf Laurel subdivision over any other interest.

Transforming WLRMS to the homeowners association serving the community took more than simply an announcement of “Now Under New Management.” Initially after the transfer, owners remained suspicious of the WLRMS board; not of the personal integrity or skill set of the individuals appointed or elected to serve, for the board consisted of our well-known neighbors. The residual fears were that the business model and the approach to decision making which led to owner frustration would be perpetuated, or the private interests of a for-profit developer would simply be replaced by personal interests of any faction who could gain control WLRMS. Fundamental change in structure, in mindset, and in action, sustained over a period of time was necessary to live up to the community’s expectations. Today the WLRMS board adheres to transparency in decision making. Both the brainstorming of ideas in Work Sessions and formal actions taken at monthly Board Meetings are open to the public, and are broadcast on line for residents who cannot participate in person. Monthly financial reports used by the board in decision making are available to owners. Each year the board as a whole votes to affirm a conflict of interest and a no self-dealing policies, and each board member individually signs a personal commitment to the policies, pledging to place the interests of the community before any personal interest or the interest of any other group.

***Mission Statement : The Wolf Laurel Road Maintenance and Security Homeowners’ Association (WLRMS) is responsible for safeguarding and improving the roads, security, safety, infrastructure, neighborhood architectural standards, natural resources and quality of life of its property owners. WLRMS Officers, Board and Committee Members, and Staff, accept this responsibility, and pledge to continue to discharge their duties for the Wolf Laurel community with a robust and renewed commitment to integrity, fiscal responsibility and transparency.***



# Wolf Laurel Road Maintenance & Security

## Resident Owned Since 2012

(continued)

There have been other changes, importantly including public accountability. WLRMS periodically, on a schedule not controlled by the board, tests financial controls through an audit conducted by an independent CPA firm. Financial policies require that projects of a certain size must have competitive bids, and projects of a larger magnitude be supported by a written project proposal published to the community prior to the meeting taking up the decision. Justification for expenditures of funds or resources must be more than a tenuous justification of an indirect benefit to the community. Legal constraints not present on a developer's private business confine the use of revenue, and the use of equipment, manpower and resources to the direct benefit of the community.

WLRMS maintains both a long range plan of goals and priorities, and a rolling 5-year strategic plan outlining what steps will be taken to advance the long range goals. WLRMS conducted a 30-year reserve study of the community's large capital expenses and projects and each year updates the study. The projection of long-range capital needs and current operations are matched each year to a 5-year rolling capital plan to identify how these needs will be funded. WLRMS observes reserve policies which require fiscal discipline to set aside and restrict funds in a segregated account earmarked for these future obligations. These measures have moved the community away from looming unfunded obligations for aging infrastructure, or the equally precarious alternative of postponing essential work (thereby compounded its cost) due to lack of funds on a "pay as you go, do only what you can pay" basis.

As we mark the milestone of the 10th anniversary, owners will hear much more about the benefits of being a resident owned community, as well as the responsibilities of residents to the community. The impetus for the transition began with and continues because of property owners' expectations of a homeowners association serving the community's interests. Property owners have set a high bar, and each day the staff and board of WLRMS strives to meet and advance the interests of the community.

Cynthia Kessler,

WLRMS President 2021-2022



## RMS - Wildfire Mitigation

*We recently received notification of important changes to the wildfire mitigation cost-share program available to Wolf Laurel homeowners:*

The non-profit organization, Mountain Valleys RC&D, will now offer 50% reimbursement to Wolf Laurel **primary residents** in both **Madison and Yancey County** who hire a contractor or rent equipment to reduce their home's risk of ignition by wildfire. Qualifying projects must be within 100 feet of the home or 10 feet from the driveway. Reimbursements are capped at \$2000.

The Cost-Share Process:

- Wildfire Risk Home Assessment (free) \*
- Application
- Reimbursement agreement
- Proof of payment to contractor
- Reimbursement

Visit [www.mountainvalleysrcd.org/mitigationcostshare](http://www.mountainvalleysrcd.org/mitigationcostshare) for more information.

\* The Wildfire Risk Home Assessment is available to **all** Wolf Laurel owners and is strongly encouraged. To schedule a home assessment:

Madison County - contact Jen Haas of Mountain Valleys  
[jen.haas@mountainvalleysrcd.org](mailto:jen.haas@mountainvalleysrcd.org) (828) 206-6159

<https://www.mountainvalleysrcd.org>

Yancey County - contact Jonathan Hartsell of Blue Ridge RC&D

[hartselljonathan@gmail.com](mailto:hartselljonathan@gmail.com) (828) 284-9818 <http://www.blueridgercd.com>

**Please note:** Most projects covered by the cost-share program will not require removal of mature trees beyond the 30-ft home perimeter. Always contact the WLRMS business office to speak with the ARB Administrator, Jered Silver, as you plan your project for assistance in determining if a permit is needed.

WLRMS

Also obtain information from the Red Cross at <https://www.redcross.org/about-us/news-and-events/news/2021/national-wildfire-awareness-month-get-ready-now.html>,  
 and from FEMA at <https://www.fema.gov/blog/may-wildfire-awareness-month>

# Wolf Laurel Wildfire Preparedness 2022

**Resist Wildfire North Carolina** - [www.Resistwildfirenc.org](http://www.Resistwildfirenc.org)

Over the past decade, we've watched the news as catastrophic wildfires increase throughout the western United States. Here in western North Carolina the threat of wildfire also exists, as witnessed in 2016 and even last autumn to a lesser extent. Wolf Laurel is a Wildland Urban Interface (WUI) community, a residential area surrounded by large tracts of undeveloped land which is particularly threatened by the potential for wildfire. The increased vulnerability of a WUI community requires homeowners to take the initiative to help protect their home and community **before** a wildfire occurs. In 2022, we encourage all Wolf Laurel property owners to raise their awareness and take action to increase wildfire preparedness in our community.



We began our wildfire preparedness campaign in January with presentations by Bo Dossett, Madison Co. Ranger of the NC Forest Service, and Jen Haas, Wildfire Preparedness Coordinator of Mountain Valleys. Important takeaways from their presentations:

1. Western NC has two fire seasons - Fall, which is usually more mild, and Spring, which runs mid-February through early-May (when trees leaf out) and is generally longer and hotter.
2. The first step in reducing wildfire risk on your property is awareness. Free home assessments and consultations are available to all Wolf Laurel residents to identify your home's wildfire risks and mitigation priorities.
3. The next step is to take action to reduce your risk. A mitigation cost-share assistance program is available through Mountain Valleys for Wolf Laurel primary residences in Madison and Yancey Co.
4. For most properties in Wolf Laurel, mitigation efforts will focus on the 30-ft perimeter around the house. Beyond that, reducing "ladder fuels" by removing dead vegetation and brush piles, cutting down small saplings, and pruning limbs of mature trees to 6-10 feet above ground is most important. *Please note that removal of mature trees beyond the 30-ft perimeter requires a permit through the WLRMS ARB.*
5. Pampas grass (*Miscanthus sinensis*), an ornamental grass which is extremely flammable and invasive, has escaped along roadsides endangering Mars Hill and occurs intermittently throughout Wolf Laurel. Measures should be taken to keep it under control.
6. Wildfire preparedness is a community responsibility that begins with individual property owners working together!

(continued)

# Wolf Laurel Wildfire Preparedness 2022

20

(continued)

Additional information will be posted on the Fire Safety page of the WLRMS website. May is Wildfire Preparedness Month, and a community event/project is currently being planned. Please consider the importance of reducing our community's wildfire risk and get involved!

WLRMS Wilderness Committee, Tedi McManus, Chair

Important Wildfire Preparedness Information:

To schedule a home wildfire risk assessment:

Madison County - contact Jen Haas of Mountain Valleys [jen.haas@mountainvalleysrcd.org](mailto:jen.haas@mountainvalleysrcd.org)

(828) 206-6159 <https://www.mountainvalleysrcd.org>

Yancey County - contact Jonathan Hartsell of Blue Ridge RC&D 828-284-9818 [hartselljonathan@gmail.com](mailto:hartselljonathan@gmail.com), <http://www.blueridgercd.com/>

Mountain Valleys mitigation cost-share assistance program (available to Wolf Laurel primary residences in Madison and Yancey Co.) <https://www.mountainvalleysrcd.org/mitigationcostshare>

NFPA - Wildfire Risk Reduction Safety Tips <https://www.nfpa.org/-/media/Files/Public-Education/Resources/Safety-tip-sheets/WildfireRiskReductionSafetyTips.pdf>

Firewise USA - Preparing homes for wildfire

<https://www.nfpa.org/Public-Education/Fire-causes-and-risks/Wildfire/Preparing-homes-for-wildfire>

Miscanthus/Pampas Grass, Madison Co.'s "Wildfire Grass"

[https://www.ncforestservice.gov/contacts/pdf/Miscanthus\\_Info\\_Sheet\\_Madison\\_Co.pdf](https://www.ncforestservice.gov/contacts/pdf/Miscanthus_Info_Sheet_Madison_Co.pdf)



**NATIONAL FIRE PROTECTION ASSOCIATION**

The leading information and knowledge resource on fire, electrical and related hazards



## Wolf Laurel Road Maintenance and Security

Please help us protect one of the natural resources of Wolf Laurel, the rare experience of a dark sky. While street lights, spotlights, and other outdoor lights are permitted in Wolf Laurel, all outdoor lights are required to be turned off after 11:00 P.M. Now that the leaves have fallen, outdoor lighting is even more visible throughout the community. The occasional use of outdoor lighting after hours is understandable. However, lights left on all night, every night, and automatic dusk-to-dawn street lights do not comply with our standards and regulations.

Please be considerate of neighbors and turn off your outdoor lights by 11:00 P.M. Install motion sensors or light timers if you need lighting to come and go between 11:00 P.M. and dawn. Any dusk-to-dawn security light can be modified to turn off automatically at 11:00 PM or to have a manual switch.

Finally, please inform your guests and renters about our community's lighting rules and encourage them to enjoy the natural beauty of Wolf Laurel's night sky.

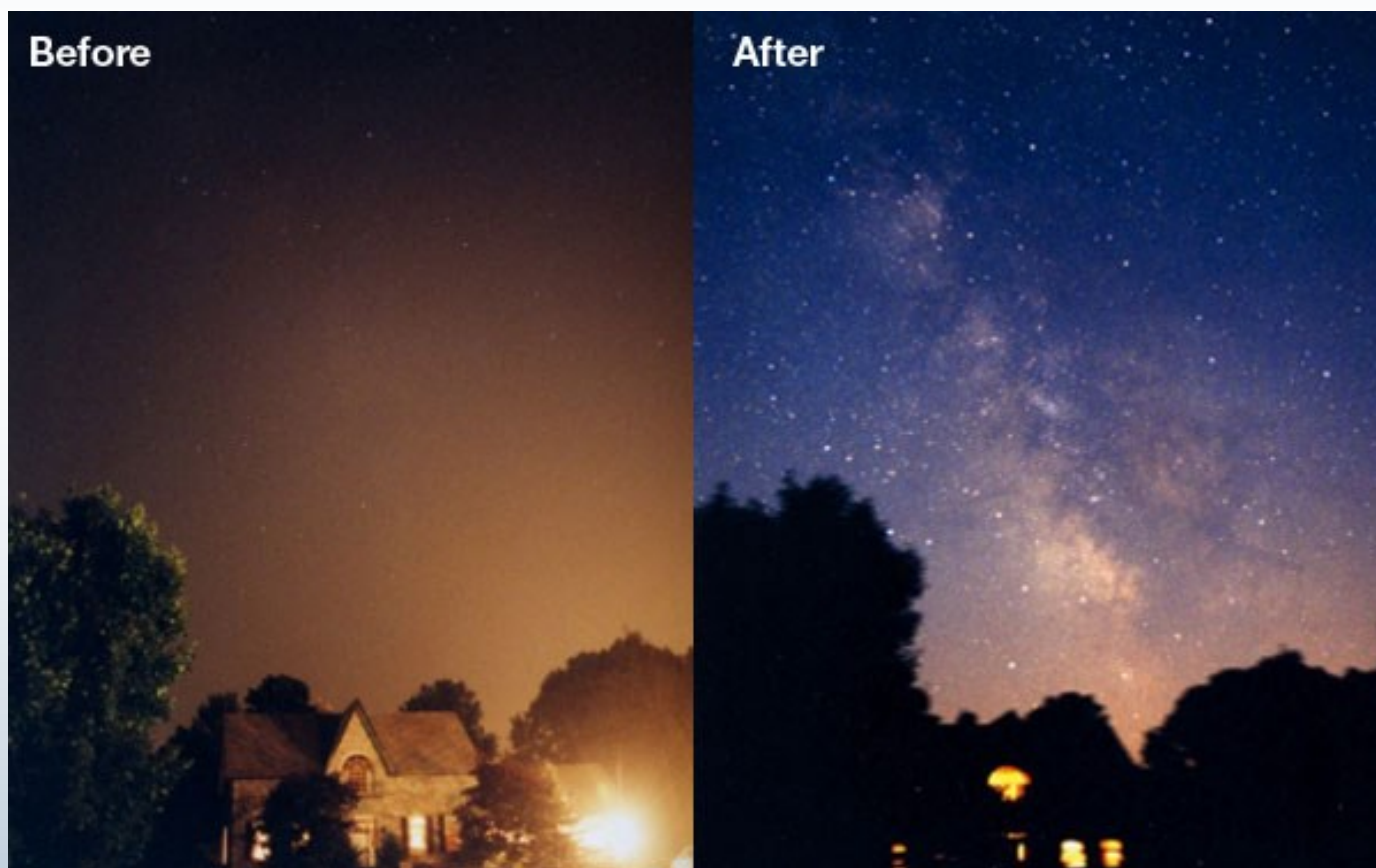


Photo from the International Dark-Sky Association, for more information visit [darksky.org/](https://darksky.org/)



# Wolf Laurel Country Club

## A Busy WLCC Season Ahead By Cathy Johnson

As in past seasons the WLCC will offer the following events to all mountain residents during 2022. (Other events may be open if there is room after the cut off dates.)

- May 24th      **A “Taco ‘Bout It” Luncheon** to introduce the 2022 **Walk in the *in the Woods Program***, developed by Yvonne Carignan and Brenda Whitt \*
- May 30th      **Memorial Day Program (see flyer on the next page)**
- June 2nd (3:00 pm) **NCFS Fire Mitigation**, Jen Haas/Susan Palukatitis; Jen Haas is the Forest Program Manager for Mountain Valleys Resource Conservation & Development. The Program will focus on fire mitigation practices in Madison and Yancey Counties and provide information regarding free home assessments to protect the beauty of our environment.
- June 3rd      **Time to Go Fishing** - Southern Drifters Outfitters
- July 2nd      **4th of July festivities:** Barbecue, games, dog parade, cloggers and a SART performance
- July 8th      **“A Treasure in the Appalachian Sky, A History of Wolf Laurel”** luncheon with co-authors Jim Klumpp & Warren Johnson
- July 16th      **Annual Hospice Event**
- Sept. 3rd      **Harvest Festival**

\* **Walk in the Woods** began last season and was developed and managed by Yvonne Carignan and Brenda Whitt. During 2022, each month beginning in May, there will be two walks in the Wolf Laurel area and one walk off of the mountain. These walks average 2 to 3 miles (moderate difficulty) and offer a great opportunity to meet and interact with other residents.



The Club Lounge

(continued)



# Wolf Laurel Country Club

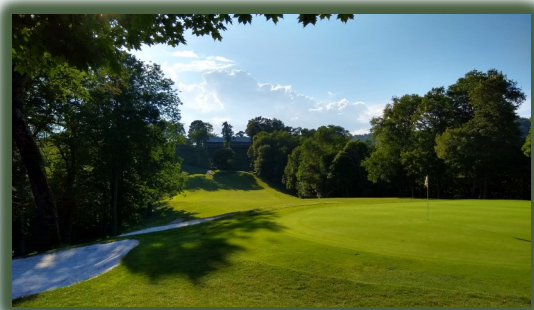
(continued)

**The Wolf Laurel Visitor Ambassador Program** will continue as a coordinated effort between WLCC, WLRMS, and WLPOA. It was launched in August of 2019 and has provided visitors that arrive at our gate, unannounced, a tour of the community. Even if they elected not to take a tour, they left with a packet of valuable information about our Wolf Laurel community. Each season, the program averaged about 17 visitors and between 20 and 25 resident volunteers. Leigh Ann Roseberry, Marketing chair for Wolf Laurel Country Club, will assume direction of this program. Her contact information is below.



Those interested in joining WLCC can contact Kelly Dale at 828-680-9771 or [Khd@wlcc.com](mailto:Khd@wlcc.com) or Leigh Ann Roseberry at 904-703-9098 or [eagles21@att.net](mailto:eagles21@att.net). Admission fees before May 31st are \$6K (social) and \$10K (golf). Admission fees after May 31st are \$10K (social) and \$15K (golf).

[WLCC - http://  
www.wolf LaurelCountryClub.  
com/](http://www.wolf LaurelCountryClub.com/)



*Remembering  
our nation's fallen*

*Memorial Day*  
Monday, May 30, 2022  
Wolf Laurel Country Club

**SCHEDULE**  
11:00 AM Ceremony of Remembrance  
12:00 PM Lunch  
Golf Scramble to Follow

All are welcome!

# Taco 'Bout It *Walk In The Woods*

May 24 - RSVP by May 22  
828-680-9773  
WLCC Dining Room at 12:00  
*Open to the Community*

**Lunch Choices:**  
Chicken Taco Salad, Cobb Salad or Grass-fed Angus Burger

**Purpose:** To provide news about Wolf Laurel's developing trail system and for Walk in the Woods.

There will be a 20-minute presentation by panel members followed by audience questions. Trail handouts will be available.

*The Walk in the Woods program that began in 2021 was a big hit. The intent of the short walks is both to provide light exercise and to acquaint members with a variety of trails located inside the Wolf Laurel gates. The walks provide residents with opportunities to enjoy flora and fauna and be inspired to begin their own interest groups for birding, wildflowers sighting and walks.*

**Program:**

- Updates in Bald Mountain Creek Nature Preserve (BMCNP)      Chuck Arthur/Sam Stebbins & Southeast Trust for Parks and Land (STPAL)
- New trails in bouldering areas      Mike Reardon, Pres. of Carolina Climbers Coalition or designee
- Wolf Laurel "Trail System"      Joe Caper
- Trails on website      Tim Carrigan
- Walking "Outside the Gates"      Brenda Whitt
- Highpoints from 2021 walks, new adventures for 2022      Yvonne Carignan

2021 "Walk in the Woods" on Sugar Fork Trail



Elk Wallow Knob Walk



Deborah Meyer celebrating walk to top of Big Bald the evening of full moon.



**WOLF LAUREL COMMUNITY ANNUAL  
MADISON COUNTY HOSPICE  
BOSTON FERN SALE**



**PREORDERS ONLY - \$25 Each  
ORDER BY MAY 19  
PICKUP ON MAY 26 AT WLCC  
EMAIL ORDER TO CRELLIN BYRD  
[crellinjb@gmail.com](mailto:crellinjb@gmail.com)  
QUESTIONS – 954-806-1902**



## Guest Commentary

In the beginning of Wolf Laurel Resort development, there were no roads, no restaurant, no lodge, but lot sales were needed. So the original developer gathered many friends from his home town area and flew them in by helicopter.

It seems they oh'd and ah'd at the marvel of the mountains and many of them selected homesites on a pre-development basis.

During this interim period of advance sales and the building of the roads, restaurant, inn, barn, Settler's Village, gate and golf course, many, many services were offered to the owners at a very reduced rate or at no charge at all. In fact, when the grand opening of the development took place in the summer of 1970, homes were being changed over from corporate supported individual wells to the central water system.

In those early years we did many things for the property owners out of respect and for the protection of property and it was an unwritten agreement to take necessary action to protect property.

With the growth of the resort and especially the increase in the number of homes and the distance from one area to another, it became apparent we needed to add to our staff in order to get the job done. We finally had to

*Continued Page 6*

Page 6

## Guest Commentary

*Continued From Page 2*

establish fees for services. These services range from inspections; turning off lights; water heaters; water faucets; check in pest control; winterize and de-winterize homes; getting homes ready for guests and many other things.

Since the middle of February, we have had two ice storms and one severe 36-inch snow storm. These conditions caused us to check on occupants with the possibility of vacating the resort. At several of these homes, we had to literally cut our way into and back out of the property. During the second storm, families were actually evacuated from the mountain. As the result of these storms there were numerous homes with power outages (power lines pulled from the house). We made every effort to restore power to all the homes. French Broad tells us that when service is removed for 15 days or more there must be another inspection by a licensed electrician before they will hook up power again. We tried to notify all those homeowners.

Also, we cleared driveways, parking areas, decks, roofs, etc., of trees and limbs. Of those homes that suffered damage, we contacted the owner and made temporary repairs.

After all the turmoil ended, we started billing for the services performed. The majority of the owners

appreciated the efforts of management under those adverse conditions. A few complained, but nothing real serious. Most everyone agreed, after learning what the charges were for.

It is gratifying to know we have caring, responsible property owners living on the mountain and dedicated employees that reported each and every trouble spot so that some action could be taken. At least now we all can feel safe in leaving our homes at the Resort and know that someone cares.

Thank you everyone at Wolf Laurel.

— NAME WITHHELD BY REQUEST

### Mountain Symphony

By Carol Lipsky

The North Wind scrapes her chilly bow  
Across the cold tight mountain.  
The winter screeches and gasps  
Diamond-cut stillness is broken by the echoing sounds.  
The trees shudder, and icy splinters staccato with sharp tinkles.

The bear grunts in his den, bass gutterals softly roll,  
The wind dies, the music ends--  
The aria is over.

## Wolf Pack - Wolf Laurel's Hiking Group

The **Wolf Pack** began before 2003 purportedly as an activity for women on Tuesdays when their husbands were playing golf on Men's Day. That may be, but goals were and continue to include fitness, friendship, adventure, and a love of nature. According to Sally Ling's article in the Fort Lauderdale South Florida Sun (Oct. 12, 2003), five women made up the Wolf Pack originally and besides hiking easier trails on Tuesdays, they also hiked more difficult trails on Saturdays. Lois Lynn Bellemare, a Wolf Laurel resident until October 2021, was on the very first hike. The group soon grew to 12 members, and of course today includes many more members including men.

Yvonne Carignan

**The Wolf Pack 2022 Schedule:** Organized hikes are scheduled each summer and run from June through September. Additional ad hoc hikes are frequently organized among members. See the schedule on the next page.

**What is Expected:** No one should attend a hike unless they are in shape to climb up and down hills. All hikers are expected to be able to follow hiking directions and not hold up the group or run too far ahead. To determine if you should be joining an off-mountain hike use the following Wolf Laurel hike as a barometer. You should be able to hike from the beginning of Nature Trail to the top of Big Bald in under 3 hours.

You will need proper equipment: fanny pack/backpack, ample water and food, poles, medical supplies (bee stings, falls, blisters), sunscreen, repellent, foul weather gear, hiking boots and proper clothing.

Carpools are formed for hikes outside of Wolf Laurel. Based on rising fuel prices, expect to chip in \$5 per person if you are not driving.

Contact: Tim Carrigan  
[tim.carrigan@gmail.com](mailto:tim.carrigan@gmail.com)

Or access

<https://www.newprism.com/wolflaurelhikes/>



## Wolf Pack Hiking Schedule

Date	Leader	Name	Distance	Difficulty	Drive Time	Meet Time	Meet Place
6/7	Russ & Marylou	Dupont Falls	3	Easy	1.50 hours	8:00	Village
6/14	Michelle Hunt	Beauty Spot	5	Moderate	1 hour	8:00	Village
6/21	Brenda Whitt	Carver Gap to Grassy Ridge	5.5	Moderate	1.25 hours	8:00	Village
6/28	Rick Zinter	Pump Gap Loop	5.1	Moderate	1.00 hour	8:30	Village
7/5	Open						
7/12	Crellin Byrd	Rocky Fork	4	Moderate		8:30	Village
7/19	Joe Capers	Double Springs/6th Symphony	4.25	Moderate	0	10:30	Big Bald Prkg Lot
7/26	Rick Zinter	Big Ivy	5.5	Moderate	.75 hours	8:30	Village
8/2	Becky Shennan	Crabtree & Roaring Forks Falls	5	Moderate		8:30	Village
8/9	Susan Blaxill-Deal	Laurel Falls Trails	4.6	Moderate		8:30	Village
8/16	Tim Carrigan	Whistling Gap	8	Moderate	0	10:30	Big Bald Prkg Lot
8/23	Terry Deal	Black Balsam	5	Moderate	1.75 hours	8:00	Village
8/30	Russ & Marylou	Sam's Knob	3	Moderate		8:30	Village
9/6	Don & Michaelene	TBD					
9/13	Cammie Monroe	Camp Creek	5	Moderate	1.25 hours	8:30	Village
9/20	Terry Deal	Walker Creek	5	Moderate	1 hour	8:30	Village
9/27	Susan Ritchhart	Devils Courthouse	6.5	Moderate	1.75 hours	8:00	Village

Source - <https://www.newprism.com/wolflaurelhikes/>

Provided by Tim Carrigan

## Hikers Helping Hikers

Right now and for the next several weeks, we will have lots of thru hikers (hikers trying to do the entire Appalachian Trail) coming through Wolf Laurel area on the AT. At this time of year, we may get 15-20 hikers per day. One of my favorite things to do is fix a cooler of snacks for the hikers. Unfortunately we are not in WL right now - returning in mid-May. If you are on the mountain and interested in being a trail angel, it is easy and very rewarding. Here is what I have done in the past:

Fill a cooler with food hikers wouldn't be able to pack such as cold soft drinks, milk, boiled eggs, fruit, cookies or brownies, or anything you have time to prepare. I usually put the cooler on the trail just off Painted Ridge - easy access to trail there. Also leave a large garbage bag for hikers to unload their trash. I leave a notebook asking hikers to leave their trail name & hometown. I put the cooler out by mid-morning and go back in late afternoon to collect.

If you want to do more, you can set up at Sam's Gap or Big Bald and serve hotdogs or hamburgers, or sandwiches. Note that the thru-hiker traffic tapers off toward the end of May.

Whatever you do, the hikers will greatly appreciate it. Enjoy!

Becky Shennan

### The View from Big Bald



# Wolf Laurel POA Library Winter 2022 Report

Yvonne Carignan

## Welcome to the Wolf Laurel Library!

For all you who are new to Wolf Laurel, welcome, and to everyone else, welcome back! Please know that the Wolf Laurel Library is open to all POA members. The Library, which resides in several rooms on the first floor and in the basement of the Community Center, has recent fiction and nonfiction books for all ages. We have more than books; puzzles, games, and DVDs are also available to borrow. Please keep in mind, this is a lending library, so once you finish the books, etc., just return them to the box in the vestibule. We hope you stop by soon!

## Off-Season Library Cleanup Continues

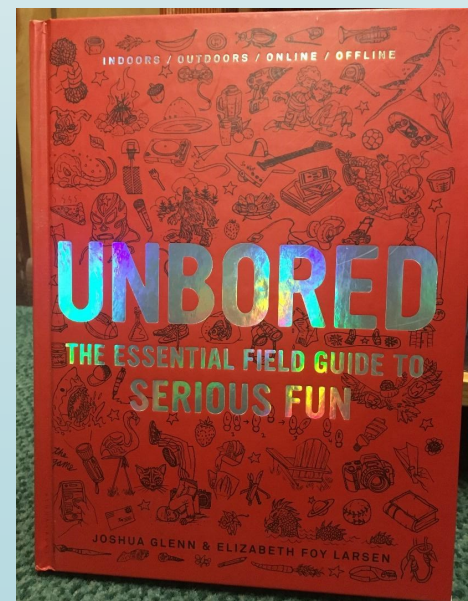
When you return to Wolf Laurel this spring, you will be surprised by all the space we have in the fiction section to hold your donations of new novels. Meanwhile, the off-season cleanup and reorganization continues. We have more space for an expanded Large-Print section of books as well as expansion room for Classic Fiction. Neither of those two categories of books will move, but nearby books will relocate. For example, Science Fiction and Westerns will move to the far side of the Fiction Room. Look for signs to help you find the books you want.

## Generous Donations this Quarter!

After a slow winter season for incoming donations of books, you were very generous during the last two months! So far, incoming gifts of 538 books, movie DVDs, puzzles and games have been added to the collection. During the same half-year span (November through April) last year, we only added 234 donations. That means we have more than twice as many donations this year than last. A similar situation is true for books returned by our readers who borrowed 241 items in the last six months. Last year, during the same six-month period, readers returned 124 items. I thought it seemed busier during this year's "slow" season than usual. The statistics show why.

Among the subjects strengthened by incoming donations are diet, exercise, and health books. But many parts of the collection – fiction, non-fiction and children's books -- are enhanced by these recent gifts. One book that especially caught my fancy is *Unbored: The Essential Field Guide to Serious Fun*, pictured below. This book currently resides on downstairs library shelving. Another gift encompassed a complete run of the captivating *Cat Who* murder mystery series by Lilian Jackson Braun.

(continued)



## Wolf Laurel POA Library Winter 2022 Report

*(continued)*

During the last few weeks, while laid up with a broken heel, I enjoyed a dip back into a favorite crime novel series written by Donna Leon and set in the watery magic of Venice. These engaging books are full of atmosphere, likable characters, and twisting plots as exotic as the Venetian setting, and our library has a lot of them. Whatever your interests in reading, you may find something you like in the Wolf Laurel Library. Come take a look.

### **Crowding in the History Section**

One of our current challenges is crowding in the History books, located near the POA office. One solution is to move the U.S. Presidents Biographies downstairs to be with the general Biography section. Then history books -- whether American History, Military History, World History, or Spying History -- could be easily contained where they are now. If anyone has a strong objection to moving the U.S. Presidents biographies to the lower lever, please do let me know ([ycarigna@gmu.edu](mailto:ycarigna@gmu.edu)), and I will find another solution.

### **Bookshelves Needed**

In my last report, I mentioned how much a donation of bookshelves helped improve organization of books in the lower level. Adding bookshelves would be another solution to crowding in the history section. If you have book shelving units to spare, short or tall, please keep in mind we need more in your library, and we accept donated bookshelves as well as donations of books!

Yvonne

Library hours are the same as the Village  
Club Community Center Hours:

May are 9-6

June 9-7

July through Oct 9-8



## Wolf Laurel Historical Society

### WLHS Announces Summer Programs

The Wolf Laurel Historical Society is pleased to announce three programs for the summer of 2022. We hope our returning members and new people on the mountain will find our programs interesting and informative, answering and raising many questions about the history of our wonderful community and our Southern Appalachian homeland. Our motto is “**Sharing our past to enrich our present**” and we plan our programs to achieve that purpose.

Our June program (Wednesday, June 22nd at 4 pm at the Wolf Laurel Community Center Pavilion) will be “**The Bald Mountain Tourist Society.**” Formed in 1889 by citizens of Madison County, this group organized camping trips from the lower county to the summit of Big Bald. Their recreational and prank-filled trips continued into the years prior to the First World War. You will hear some of the stories of their pranks and adventures and will meet colorful characters including S. O. Deaver and Jean Pórche (and his monkey) who led this effort. We hope to have some of their descendants (not the monkey’s) as our special guests. Jim Klumpp, co-author of *A Treasure in the Appalachian Sky: A History of Wolf Laurel in Madison and Yancey Counties, North Carolina* will present the program.

Our July program (Tuesday, July 19th at 7 PM at the Ebbs Chapel Community Performing Arts Center Auditorium, 271 Laurel Valley Road, behind the Bright Hope Laurel Methodist Church) will feature Professor Dan Pearce from the University of North Carolina Asheville speaking on “**Mountain Moonshine.**” Based in his extensive research for his book, *Tar Heel Lightnin’*, Professor Pearce will weave the story of the place of moonshine and moonshiners in the Southern Appalachians and particularly in our adjacent counties. We always attract a wide audience from our Upper Laurel neighbors to our Ebbs Chapel programs and they will no doubt add stories of their own.

Our August program (Wednesday, August 24, at 4 PM at the Wolf Laurel Community Center Pavilion) will look back at a landmark moment in Wolf Laurel history: “**The Resident-Owned Community: The End of Bald Mountain Development Corporation.**” Bald Mountain Development Corporation was formed by the Edwards family in 1964 and managed Wolf Laurel for nearly a half century. This December marks the tenth anniversary of end of the corporation and the achievement of all the advantages and responsibilities of our resident-owned community. A panel of guests with perspective on those events and the significance of the moment will be interviewed by Jim Klumpp. Come help us celebrate your ownership of the infrastructure and ambiance of this wonderful mountain community.

Look also for our annual meeting (Wednesday, August 3 at 4 PM at the Wolf Laurel Community Center Pavilion) where the Society elects its officers for the coming year and conducts its business as an organization. The meeting is open to Society members, but memberships will be for sale at the door.

We offer special thanks to our Program Committee for this year: Gene Wolf, Robert Hicks, and Joanne Duncan. They had excellent ideas for programs that you will be seeing in this and coming years. We welcome your ideas at any times for WLHS programs. Our problem is we have so many wonderful possibilities for programs and not enough opportunities to bring them to fruition.

(continued)



# Wolf Laurel Historical Society

## WLHS Announces Summer Programs

(continued)

We also want to thank our 2020-21 members for their support of the Society. It was a banner year. Our largest membership (114 members) in the Society's history contributed to our programs and activities. We republished the book *Upper Laurel and Her People*, completed an agreement with the Southern Appalachian Archives at Mars Hill University for perpetual care of the Society's archives, and completed a project to reinstall a dedicatory plaque honoring Sheila Slater in the Village Pavilion. We will celebrate the "mother of the Wolf Laurel social scene" at one of our meetings and acquaint those who live with the benefits of her efforts with her contributions, even those who did not know her name. We hope that all those members who helped us accomplish so much will renew their membership in 2022 and continue to support our activities.

And a special invitation to all those who are new to the mountain. Please attend our programs (they are open to all and are free of admission) and join the Society to help support our programming and other activities to preserve and celebrate our history. Membership is only \$20 per year for individuals and \$35 for families. You will be helping to appreciate and celebrate our rich community.

Information on our programs for the coming year and on membership in the Society can be found at our website <https://WLHistory.org>.

And, by the way, the website is also the place to find the "Wolf Laurel History Blog" including the stories of some interesting moments in the history of our community, and "Wolf Laurel Stories" written by our members to tell their tales of their experiences at Wolf Laurel. Stay and browse a while.

Don't overlook our website's introduction to the various historical offerings of the Society you may wish to have in your home. These include prints of the "Willis Barn, 1890" (currently repurposed as the Wolf Laurel Community Center); the "Developer's Maps," presenting the original concept map for Wolf Laurel; and two books elaborating the history of our community: *Upper Laurel and Her People*, chronicling the original families of Upper Laurel; and *A Treasure in the Appalachian Sky: A History of Wolf Laurel in Madison and Yancey Counties, North Carolina*. Information for acquiring these items is at the website.

We look forward to seeing you to celebrate our community in the summer of 2022.

The WLHS Board

The Wolf Laurel Historical Society, <https://wlhistory.org/>



Oscar Willis Barn, c1890

## Wolf Laurel Historical Society

Madison and Yancey Counties, North Carolina



The Buck House

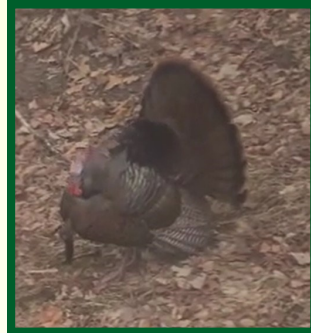
Dave Buck House, c1930

Theodore Meyer - from Wolf Laurel Nextdoor

**LOOK WHO SHOWED UP ON LAUREL LANE  
JUST IN TIME FOR BREAKFAST.**



Gayle Barr's  
Visitor



Kelly Willette - from WL Nextdoor



**VISIT TO MY FEEDER,  
ROSE BREASTED GROSS BEAK.**

Rebecca Martin - from WL Nextdoor



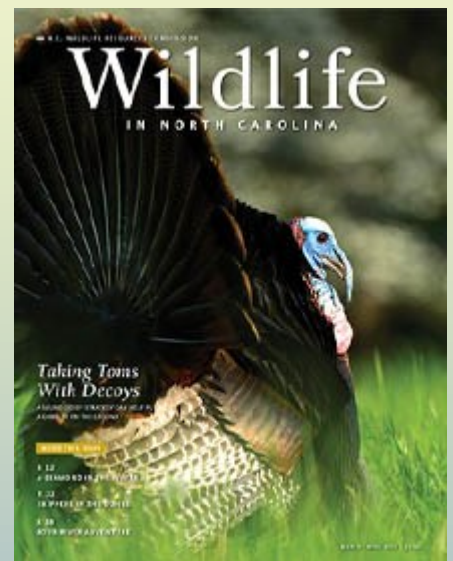
## Wildlife in North Carolina Magazine

The latest issue of Wildlife in North Carolina magazine features an informative story on how N.C. Wildlife Resources Commission field staff monitors striped bass migration in the Roanoke River to ensure the fishery's future.

Read it for free (and subscribe) at: <http://bit.ly/2LThnOR>

*Wildlife in North Carolina* - <http://bit.ly/2LThnOR>

For immediate assistance, please call 800-786-2721





Conservation. Recreation. Community.

10 years | 2012 - 2022

Attached is the updated map of the trails “behind the gates”. Note - we’ve built a parking area at the base of the power lines near the Buck House Inn. This will keep park visitors from driving through the gates.

We continue to add bouldering related trails and signs on both tracts. We’ve done more work on the walking trails along Bald Mtn Creek.

We’ll have a Bald Mountain Creek Preserve Friends group meeting when the summer crowd arrives - date still to be scheduled.

Happy Trails, Bill Jones

Executive Director

[www.stpal.org](http://www.stpal.org)

\* <https://stpal.org/our-places/>

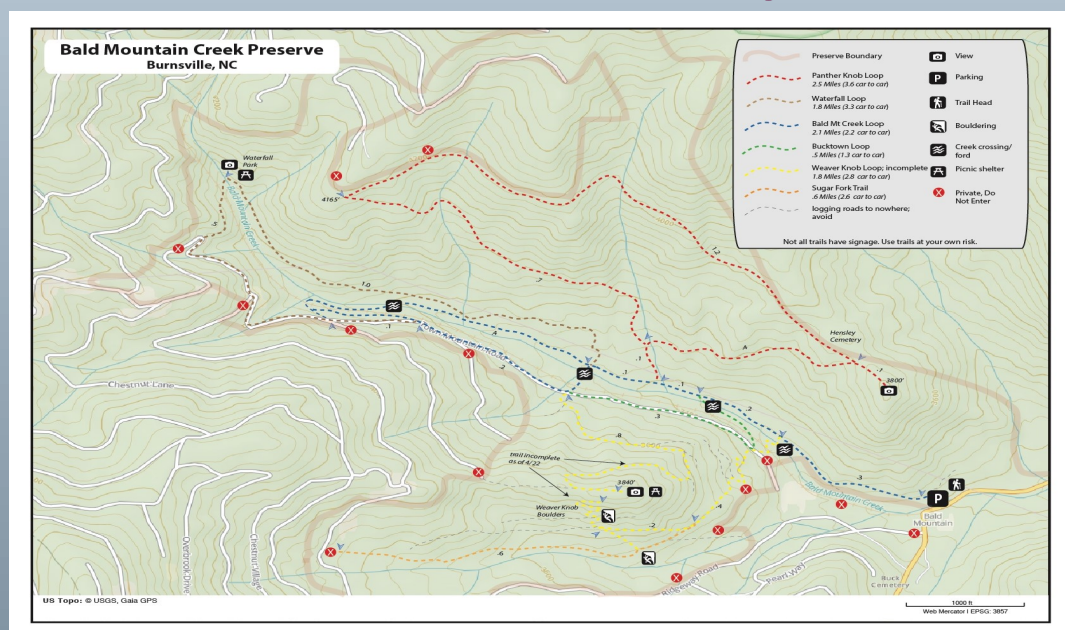
\* <https://stpal.org/our-places/bald-mountain-creek-nature-preserve/>

\* <https://carolinaclimbers.org/node/1228>

## Bill Jones STPAL Video

<https://www.youtube.com/watch?v=j1zbr8mJFIE>

## Hiking Map North



Conservation. Recreation. Community.

10 years | 2012 - 2022

**Mike Reardon**

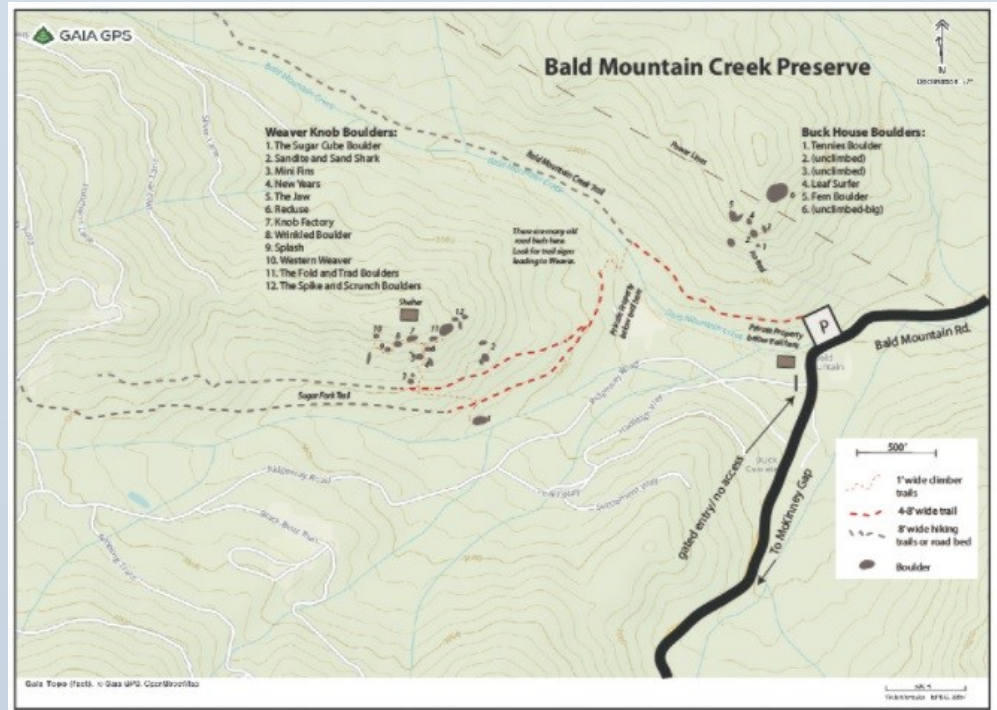
*Executive Director*

Carolina Climbers

Coalition

828-280-4046

McKinney Gap and Weaver  
Knob Boulders at Bald Mt  
Creek Preserve →



## Carolina Climbers Coalition

<https://carolinaclimbers.org/>



**Join the CCC!**

[https://carolinaclimbers.org/civicrm/contribute/transact?  
reset=1&id=21](https://carolinaclimbers.org/civicrm/contribute/transact?reset=1&id=21)



## Announcing the 2022 Special Operations Warrior Foundation 13th Annual Golf Tournament - August 27th

Since 2010, the Wolf Laurel Community has been involved with the Special Operations Warrior Foundation (SOWF). The SOWF is an American tax-exempt 501 nonprofit organization founded in 1980 to provide college scholarships and educational counseling to the surviving children of Special Operations personnel killed in the line of duty. These services are provided throughout the United States, or overseas, depending upon where the surviving children reside.

Should a Special Forces Operator parent make the ultimate sacrifice, SOWF will be by the side of their surviving spouse and children. Their commitment is to ensure every child of fallen Special Operations Personnel receives a college education. As of November 2020, the expanded program eligibility now includes children of ALL Medal of Honor recipients as well.

The SOWF ensures academic success through much more than simply a tuition check. The SOWF takes a “cradle to career” approach: providing students with tools for educational success, including preschool funding, academic counseling, private tutoring, funding for private K–12 education, programs designed for children with special needs, college planning, coaching and mentoring, and college-to-career transition. They are committed to funding the education of nearly 1,000 children, with 37 of those being children of Medal of Honor Recipients. Unfortunately, there will be more families in the future that require our support. We will be there for them.

It is with great pleasure that I announce that the SOWF has just been awarded their 16th, consecutive 4-star rating from Charity Navigator. Below (see next page) is the letter from Charity Navigator. If you would like to be involved in this worth cause, please contact me:

Joe Capers,  
863-255-8686

[joe.capers@gmail.com](mailto:joe.capers@gmail.com)



139 Harristown Rd • Glen Rock, NJ 07452  
phone (201) 818-1288 • fax (201) 818-4694  
[www.charitynavigator.org](http://www.charitynavigator.org)

# Special Operations Warrior Foundation

Dear Clayton Hutmacher,

On behalf of Charity Navigator, I wish to congratulate Special Operations Warrior Foundation on attaining the coveted 4-star rating for demonstrating strong financial health and commitment to accountability and transparency.

The nonprofit sector is advancing and expanding. As our organizations evolve, so do the desires and interests of our supporters. Astute donors are yearning for greater accountability, transparency, and for concrete results from us. With more than 1.5 million American charities, Charity Navigator aims to accentuate the work of efficient and transparent organizations. The intent of our work is to provide donors with essential information to give them greater confidence in both the charitable decisions that they make and the nonprofit sector.

Based on the most recent information available, we have issued a new rating for your organization. We are proud to announce Special Operations Warrior Foundation has earned our 16th consecutive 4-star rating. This is our highest possible rating and indicates that your organization adheres to sector best practices and executes its mission in a financially efficient way. Attaining a 4-star rating verifies that Special Operations Warrior Foundation exceeds industry standards and outperforms most charities in your area of work. Less than 1% of the charities we evaluate have received at least 16 consecutive 4-star evaluations, indicating that Special Operations Warrior Foundation outperforms most other charities in America. This exceptional designation from Charity Navigator sets Special Operations Warrior Foundation apart from its peers and demonstrates to the public its trustworthiness.

*Forbes*, *Business Week*, and *Kiplinger's Financial Magazine*, among others, have profiled and celebrated our unique method of applying data-driven analysis to the charitable sector. We evaluate ten times more charities than our nearest competitor and currently attract more visitors to our website than all other charity rating groups combined, thus making us the leading charity evaluator in America. Our data shows that users of our site donated more than they planned to before viewing our findings, and in fact, it is estimated that last year Charity Navigator influenced approximately \$10 billion in charitable gifts

Your achievement and the 4-star rating will enhance your organization's fundraising and public relations efforts. Our favorable review of Special Operations Warrior Foundation's financial health and commitment to accountability & transparency is now visible on our website.

We wish you continued success in your charitable endeavors.

Sincerely,

Michael Thatcher,

President and CEO

Special Operations Warrior Foundation  
1137 Marbella Plaza Drive  
Tampa, FL 33619 - <https://specialops.org/>



## 2022 Ebbs Chapel Summer Series - Music and Stories in a Beautiful Setting



### Kruger Brothers / Kontras Quartet June 19 - 4 & 7 pm shows \$45

A rare opportunity to see this wonderful blend of musicians in a special venue. Hear them perform "Lucid Dreamer," "Roan Mtn Suite," and others... start the summer with a dream!

### Josh Goforth

Sunday, July 24 - 4:00pm \$20

Songs and stories from multi-talented native son!



### The Burnett Sisters Band w/Colin Ray

SUNDAY, AUGUST 21 - 4:00pm \$15

Old-time, bluegrass, country and gospel.

Among the best in today's traditional music!



Ebbs Chapel Performing Arts Center  
271 Laurel Valley Road , Mars Hill 28754  
Tickets at (828)649-1301 or [madisoncountyyarts.com](http://madisoncountyyarts.com)

## MADISON COUNTY ARTS COUNCIL

### \* Bluff Mountain Festival

JUNE 11th, 10 AM - 5 PM - Hot Springs Resort and Spa, see next page.

<https://madisoncountyarts.com/events/bluff-mountain-festival/>



### \* Kruger Brothers in Concert

JUNE 19th, 4 PM & 7 PM shows  
- EBBS Chapel

<https://madisoncountyarts.com/events/kruger-brothers-with-kontras-quartet-in-concert-4-7-pm-shows/>



### \* Josh Goforth in Concert

July 24th, 4 PM - EBBS Chapel

<https://madisoncountyarts.com/events/josh-goforth-in-concert-at-ebbs-chapel/>



### \* The Burnett Sisters Band in Concert

August 21st, 4 PM - 7 PM- EBBS Chapel

<https://madisoncountyarts.com/events/the-burnett-sisters-band-in-concert-at-ebbs-chapel/>





The Madison County Arts Council  
Presents the 25th Annual



# Bluff Mountain Festival

Hot Springs, North Carolina

**SATURDAY JUNE 11 2022 10am-6pm**

A special tribute to Arvil Freeman

**AT THE HOT SPRINGS RESORT & SPA**

**All Acoustic! Old Time - Bluegrass**

**Ballads - World Class Clogging**

**Silent Auction - Cash Raffle**

**Food Vendors - Art Market**

**Family Friendly and Free! No Pets Please**

**828.649.1301 [madisoncountyarts.com](http://madisoncountyarts.com)**

**Spa and Camping Info: 828.622.7676 [nchotsprings.com](http://nchotsprings.com)**



**HOT SPRINGS**  
RESORT AND SPA EST. 1778



Laura Boosinger  
Executive Director  
[www.madisoncountyarts.com](http://www.madisoncountyarts.com)  
PO Box 32  
Marshall, NC 28753  
(828) 649-1301  
[madcoed@gmail.com](mailto:madcoed@gmail.com)

The Madison County Arts Council was awarded a grant from the  
[Blue Ridge National Heritage Area. www.wARTFM.org](http://www.wARTFM.org)

The nonprofit arts and culture industry generates \$2.12 billion in direct economic activity in North Carolina, supporting almost 72,000 full-time equivalent jobs and generating \$201.5 million in revenue for local governments and the State of North Carolina. For more information click <https://www.ncarts.org/afta>

# Ebbs Chapel School

The Upper Laurel Community Organization (ULCO) has done a tremendous job renovating the Ebbs Chapel School. Most of the funding has come from revenue from events such as the Blackberry Festival, musical and other events in the auditorium, plus a few grants and donations. Covid restrictions have seriously limited those funding sources, therefore ULCO is requesting your assistance in completing the last of the renovations. The recent addition of mini-split heating in existing renovated spaces provides the ability for year-round use. ULCO would appreciate your financial assistance to complete renovations.



Thank you,  
Rich Ashley



Upper Laurel Community Organization is in the process of installing mini splits in the Ebbs Chapel Community Center. This is a necessary, but expensive endeavor. Renovations have been ongoing for several years and are nearing 85% completion.

We are graciously accepting donations currently to help with remaining costs and are a 501(c)3 organization.

Upper Laurel Community Organization  
1601 Smith Creek Road  
Mars Hill, NC 28754



WL Nextdoor

**Beth Ann Crowder**

Our second annual **Craft Fair** will be held May 7th from 9 am to 3 pm on the beautiful grounds of the Big Ivy Historical Park. We are looking for vendors of handcrafted items (please no direct sales or resale items). There is a \$35 non-refundable fee, and you will need your own tables/tent. If you would like to be a vendor please call Beth Ann Crowder at 828-777-7237 for more information. We will be having a bake sale and concessions. Proceeds go toward upkeep of the buildings and grounds.

# Outdoor Craft Fair May 7, 2022



## Big Ivy Historical Park

540 Dillingham Rd.

Barnardsville

Concessions

9am-3pm

Bake Sale

The cabins and school house open for touring.



Welcome to  
**MADISON COUNTY**  
**NORTH CAROLINA**



***Exploring Our Forgotten Past: Fort San Juan,***

May 3rd from 5:00 pm to 8:00 pm at the Rural Heritage Museum on the MHU campus (open Tuesdays 5 to 8pm and Saturdays 9 to 2pm)

Mars Hill "**First Fridays**", starting May 6th from 5:00 pm to 8:00 pm

Marshall has Third Thursdays from 5 to 8pm, and the **Southern Appalachian Repertory Theatre (SART)** season begins on May 19th with Sisters of Swing. More information at <https://www.madisoncounty-nc.com/2022/>

Contact Us - **Madison County Visitor Center**  
56 South Main Street, Mars Hill, NC 28754  
(828) – 680-9031, [info@visitmadisoncounty.com](mailto:info@visitmadisoncounty.com)  
<https://visitmadisoncounty.com/>  
<https://visitmadisoncounty.com/calendar/month/>



**Appalachian Barn Alliance** fundraiser at Echoview Fiber Mills on June 3 & 4.

More information at <https://visitmadisoncounty.com/appalachian-barn-alliance/> and <https://www.madisoncounty-nc.com/news/>

## ***Carolina Mountains Literary Festival***

The Carolina Mountains Literary Festival is excited to announce our author lineup for 2022. The festival brings dozens of authors to intimate venues in and around the Burnsville Town Square September 8-10, for free readings and discussions of their books, with plenty of opportunity for questions and conversation.

Book signings will be held on Friday and Saturday, and books will be available for purchase at the festival.

Four three-hour writing workshops for fiction, memoir, poetry, and multi-genre are also offered for a nominal registration fee.

Registration will begin soon for the workshops and the Saturday night Keynote event will feature "Appalachian noir" author David Joy (Where All Light Tends To Go, When These Mountains Burn, and more).

More information can be found on our website, [cmlitfest.org](http://cmlitfest.org), or contact [cmlitfest@gmail.com](mailto:cmlitfest@gmail.com)



**VOLUNTEERS NEEDED!** Several festival planners are retiring this year. In order to ensure that the Festival continues we need your help. It's fun!

## *The Village Club*

### Wolf Laurel Village Club Facebook Page

The upcoming Village Club season for 2022 is now in the works. We would like to invite all Village Club members to join the Wolf Laurel Village Club Facebook page. There, you will see the latest communications, events, and all the photos of the members enjoying themselves throughout the year. (Please note this page is not for personal advertising of any services or businesses. Administrators must approve any post to the page and request to join.)

To get started, open Facebook and in the Facebook search bar type *Wolf Laurel Village Club* and then request to join; or click on link below.

<https://www.facebook.com/groups/342942392454360>

We look forward to having you on our Facebook Page!



#### Wolf Laurel Village Club

Private group · 259 members

Join group



About Discussion

##### About this group



##### Private

Only members can see who's in the group and what they post.



##### Visible

Anyone can find this group.

## **WLPOA and Village Club Information**

### **WLPOA Website**

The WLPOA website has been redesigned - "Check it out." - <https://www.wolflaurelpoa.com/>. It includes information featured in previous editions of Top of the Bald:

- ⇒ Board of Directors and Committee Chairs - [https://www.wolflaurelpoa.com/files/ugd/1610a3\\_120835d9b038484f9a75fc0c997c18c2.pdf](https://www.wolflaurelpoa.com/files/ugd/1610a3_120835d9b038484f9a75fc0c997c18c2.pdf)
- ⇒ WLPOA / Village Club Office Contact Information - [https://367ab657-4382-4e2d-ae61-4bb3593fob06.filesusr.com/ugd/1610a3\\_ca1c51aa24d04bbdb56614285794154a.pdf](https://367ab657-4382-4e2d-ae61-4bb3593fob06.filesusr.com/ugd/1610a3_ca1c51aa24d04bbdb56614285794154a.pdf)
- ⇒ WLPOA Committees - [https://www.wolflaurelpoa.com/files/ugd/1610a3\\_6e50b5791a9e4cd59bc6c19ffb4516e6.pdf](https://www.wolflaurelpoa.com/files/ugd/1610a3_6e50b5791a9e4cd59bc6c19ffb4516e6.pdf)
- ⇒ WLPOA and Village Club Benefits - [https://www.wolflaurelpoa.com/files/ugd/1610a3\\_c140ecfc0b9a4aaebc87d8216a6ecbd7.pdf](https://www.wolflaurelpoa.com/files/ugd/1610a3_c140ecfc0b9a4aaebc87d8216a6ecbd7.pdf)
- ⇒ Package Cabin Procedures - [https://367ab657-4382-4e2d-ae61-4bb3593fob06.filesusr.com/ugd/1610a3\\_310b8001005d42599aebbd79dofc98c6.pdf](https://367ab657-4382-4e2d-ae61-4bb3593fob06.filesusr.com/ugd/1610a3_310b8001005d42599aebbd79dofc98c6.pdf)
- ⇒ WL Facebook Pages and Websites - [https://367ab657-4382-4e2d-ae61-4bb3593fob06.filesusr.com/ugd/1610a3\\_9b1b79531b5847d8833c88b069186e62.pdf](https://367ab657-4382-4e2d-ae61-4bb3593fob06.filesusr.com/ugd/1610a3_9b1b79531b5847d8833c88b069186e62.pdf)

Feedback, comments, and suggestions are welcome - [larryv8@gmail.com](mailto:larryv8@gmail.com)



## [Redesigned WL POA / Village Club Website](#)

Everyone is encouraged to visit the recently redesigned WLPOA website at <https://www.wolflaurelpoa.com>. Anyone can access the site except for the WLPOA Member Directory area (for members only). On the site you can access information regarding the POA, the Village Club, and Local Resources - Navigate to the site or use the links listed below.



### WLPOA

- [About Wolf Laurel](#)
- [Board of Dir. Contact Info.](#)
- [Mission](#)
- [Board & Committee Chairs](#)
- [Policies & Forms](#)
- [Committees](#)
- [Benefits](#)
- [Member Directory](#)
- [Member Contact Info Form](#)
- [Emergency Numbers](#)
- [Where to go for Assistance](#)

- [Area Churches](#)
- [Wolf Laurel on the Internet](#)
- [Solid Waste Disposal](#)
- [Walking in Madison County](#)
- [Wolf Laurel Map](#)
- [Wolf Laurel Roads & Security](#)
- [Wolf Laurel Historical Society](#)
- [Wolf Laurel Country Club](#)
- [Wolf Laurel Ski Resort](#)
- [Fire Safety in Wolf Laurel](#)

### Village Club

- [Welcome to the Village Club](#)
- [Announcements](#)
- [Programs](#)
- [Fees](#)
- [Facebook page](#)
- [Brochure](#)
- [Charter Members](#)

### Policies & Forms

- [WLPOA Bylaws](#)
- [Standing Rules](#)
- [Personnel Policies](#)
- [Membership Options & Fees](#)
- [Budget & Purchasing Policies](#)
- [Package Deliveries](#)
- [Classified Rates](#)
- [Website Terms & Conditions of Use](#)
- [New Resident Info Contact Form](#)
- [Package Cabin COVID Procedures](#)
- [Notice of Resale Form](#)

### Local Resources

- [Wolf Laurel Entities](#)
- [Emergency Numbers](#)
- [Advertisers](#)



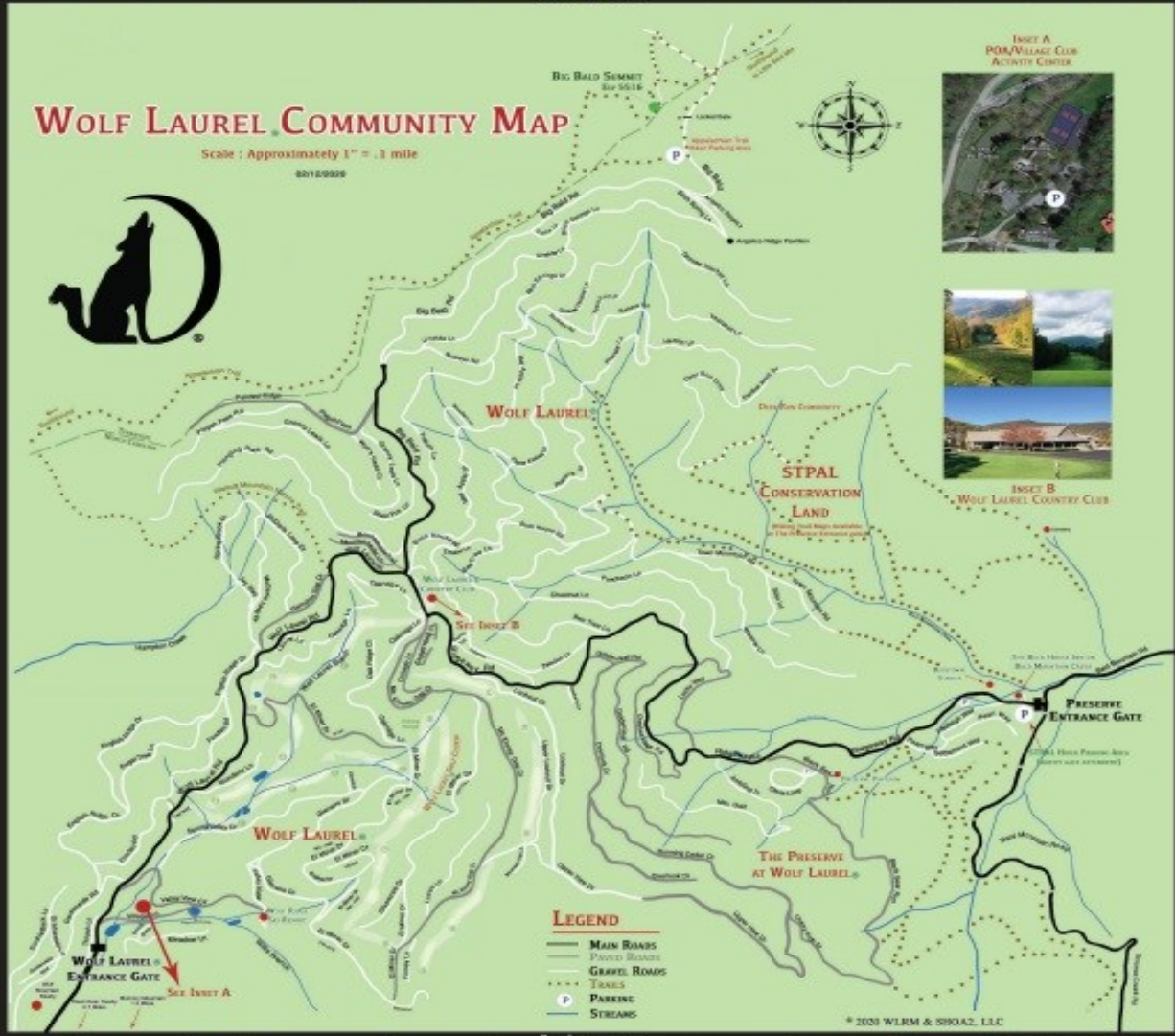


# Wolf Laurel Road Maintenance and Security WL Map

Click on the map to see a digital version or find it at

[https://www.wolfaurelpoa.com/files/ugd/1610a3\\_395478a5b51847e0afdd7f285a94eb36.pdf](https://www.wolfaurelpoa.com/files/ugd/1610a3_395478a5b51847e0afdd7f285a94eb36.pdf)

<b>BLACK BEAR REALTY, INC.</b> 828-685-2555 201 Professional Blvd Raleigh, NC 27604	<b>Hill's PLUMBING CONTRACTOR</b> Commercial & Residential John Hill, Owner 828-689-2922 john@hillsplumbing.com	<b>Freeman's Construction &amp; CTS, LLC</b> Marshall, NC General Contracting Residential, Commercial, Industrial 828-689-8400	<b>KUDZU SURVEY ASSOCIATES, PLLC</b> Steven W. Hight, PLS Principal Wolf Laurel Resident 828-689-6076 830 Highland Ridge Drive Raleigh, NC 27607	<b>Mountain Laurel REALTY</b> Real Estate 828-689-2422 www.mountainlaurelrealty.com	<b>Redwolf Roofing Professionals</b> Commercial & Residential Matt Swartzick, Owner 828-772-8776
<b>Northland Tree Service</b> Landscape & More 828-251-8998	<b>P&amp;M Wholesale Tire</b> Alignment Oil Changes • Brakes A/B Mixes & More of Your Choice 828-256-4537	<b>Blossman Gas &amp; Appliance</b> Superior propane service since 1957 2738 Wood Hay 196 828-682-9719	<b>Mountain Grading</b> Harvey English (828)206-2661 Excavation • Driveways • Gravel • Trucking	<b>Wallin Builders, Incorporated</b> Multi-family, commercial, residential 919-273-1111	<b>Donovan Electric Inc.</b> Commercial & Residential 488 Elmer Drive • Morrisville, NC 27554



<b>KW</b> Keller Williams 828-268-1431	<b>Beaver Contracting</b> Mini-Hoe Services 828-268-1431	<b>Tree &amp; Shrub</b> 828-268-1431	<b>LIL MANS LAWN &amp; LANDSCAPING</b> CLIENT ENGLISH 828-778-0885	<b>Mark Fox</b> 828-689-0906	<b>FOX</b>	<b>ELEMENTS OF EARTH LANDSCAPING</b> 828-268-1431
<b>Ride THE WOLF</b> 828-268-1431	<b>MORGAN LANDSCAPE &amp; HYDROLOGISTS</b> 828-713-8458	<b>J.P. Shelton Electric</b> 828-252-4733	<b>J.P. Shelton Electric</b> 828-252-4733	<b>ACTION</b> 828-268-1431	<b>HICKS REAL ESTATE GROUP</b> 828-268-1431	<b>Wolf Mountain Realty, Inc.</b> 828-689-2422

*TOB Advertisers*

Pages 51-63

Click on a listing below to navigate to the Ad or to their website.

[Asheville Home Repair ..... 51](#)

[Precision Restoration Services..... 52](#)

[Deb d’Aquín, Real Estate Advisor ..... 53](#)

[Affordable Tree Care ..... 54](#)

[Mike Whitt Maintenance..... 55](#)

[\*A Treasure in the Appalachian Sky ..... 55\*](#)

[Blue Ridge Shine ..... 56](#)

[Akut-Abuv, Professional Painting Service ..... 57](#)

[Glorious Mayhem Handyman ..... 58](#)

[Boundless Body & Massage..... 59](#)

[Hicks Real Estate Group..... 60](#)

[Black Bear Realty, Inc ..... 61](#)

[Wolf Mountain Realty ..... 62](#)

[Mountain Laurel Realty ..... 63](#)

[Advertising Information ..... 64](#)

*Wolf Laurel Map - Page 63*

*Thank You! to our Advertisers*

*Have a great Spring!*

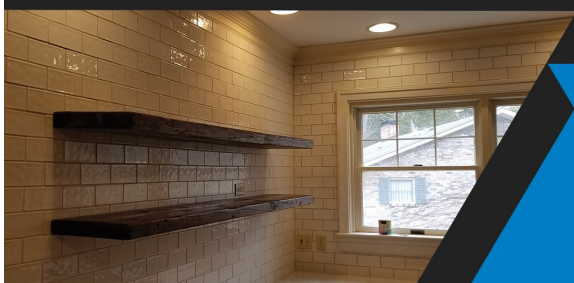


# ASHEVILLE HOME REPAIR

QUALITY SERVICE

## SAFE & INSURED

We not only answer and return phone calls. We specialize in quality craftsmanship. Saving you time and money, because we strive to be both dependable and accessible, giving your home the attention it deserves. A locally owned business with over 18 years of experience.




Call Asheville Home Repair today - We can knock out that heavy home maintenance list and help you with those much needed renovations. Call us, so you can get back to doing what's important ASAP!

## Home Projects

- Paint
- Flooring
- Tile
- Carpentry
- Decks
- Roof & Chimney Repair

[www.AshevilleHomeRepair.com](http://www.AshevilleHomeRepair.com) 

**(828) 777-2069** 

Western North Carolina   
Wolf Laurel to Asheville



**PRECISION RESTORATION SERVICES**

**WATER, FIRE, SMOKE, STORM DAMAGE  
& MOLD REMEDIATION SPECIALISTS**

***Proudly serving the Wolf Laurel Community  
for 21 years***

***24/7 Emergency Services [prs2restore.com](http://prs2restore.com)***

**828-645-4546**





**Deb d'Aquin**

REAL ESTATE ADVISOR

[debdaquin@mountainscarolina.com](mailto:debdaquin@mountainscarolina.com)

406.407.0156

**Wolf Laurel Lots that SELL are lots  
featured on [www.premierelots.com](http://www.premierelots.com)**

**I've got \$4.5 million listings in  
lots and houses under contract  
and closing in the next 48 days.**

**CALL ME. 406.407.0156**

**Deb d'Aquin**

**[Debdaquin@mountainscarolina.com](mailto:Debdaquin@mountainscarolina.com)**

**Cool House Connection**



CAROLINA  
LIVING

# Affordable Tree Care

. Free Estimates



. Same-Day Response

. Over 13 Years of Experience

**Serving the High Country and Western North Carolina**

**(828) 832-0165, (828) 208-3935**

**<https://www.affordabletreecarewnc.com/>**

Tree Removal

Brush Removal

Stump Grinding

Lot & View Clearing

Crane Removal Service

Bucket Truck Service

Stump Cleanup



# Mike Whitt Maintenance

- ◆ Plumbing Repairs
- ◆ Home Watch Service
- ◆ Basic Maintenance
- ◆ Home Winterizations
- ◆ VRBO Services

**828-208-1431**

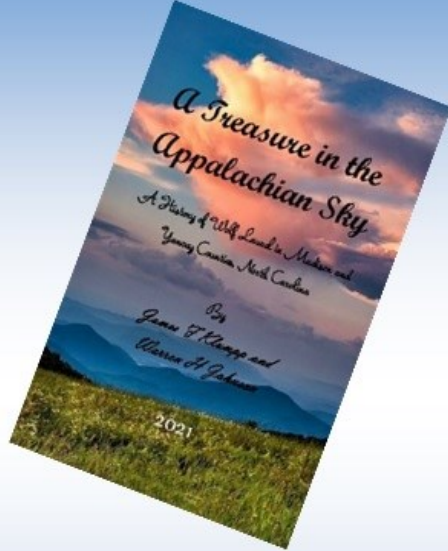
**drumminmike@yahoo.com**

*Buy Your Copy Now*

## *A Treasure in the Appalachian Sky*

*A History of Wolf Laurel in Madison and  
Yancey Counties, North Carolina*

For your reading pleasure, for your coffee table  
and guests, for a valued gift to those you know  
who love Wolf Laurel



Contact: Jim Klumpp, [jklumpp@umd.edu](mailto:jklumpp@umd.edu) or Warren Johnson, [warrenjohnson5@gmail.com](mailto:warrenjohnson5@gmail.com)

For more information or to order a copy by mail visit our website:  
<https://wlhistory.org/AppalachianSky/>



# BLUE RIDGE SHINE

**A FULL SERVICE CLEANING COMPANY  
SPECIALIZING IN VACATION RENTALS**

**LOCALLY OWNED**

**FULLY INSURED**

**FREE ESTIMATES**

**MICHELLE MASSEY-SMITH**

**828-206-1430**

*LET BLUE RIDGE SHINE, SHINE YOUR HOME TODAY*





'Cover The Mountain'

# Akut-Abuv

PROFESSIONAL PAINT SERVICE



TREE SERVICE, LANDSCAPING  
DRIVE THRU NURSERY:  
HWY. 19 E, BURNSVILLE




DRIVEWAY: SEALING, PAVING,  
PAVER & REPAIR SERVICE

828-208-5285

LEE PETERSON  
akut\_abuv@hotmail.com





Glorious Mayhem Cleaning and Handyman LLC

<https://www.gloriousmayhemllc.com>  
(828)367-2154

**We cover Vacation Rentals, Move In/Out Cleans, Residential, Spring Cleaning, Deep Cleans, Post Construction Cleaning, and more. We also cover handyman projects. Call or email today for pricing.**

**Gordon or Jennifer Welch  
(828)367-2154**

**[https://www.gloriousmayhemllc.com/  
testimonials](https://www.gloriousmayhemllc.com/testimonials)**

**[Gloriousmayhemllc@gmail.com](mailto:Gloriousmayhemllc@gmail.com)**



## Boundless Body Massage & Movement llc

*"My passion is treating clients by providing effective and relaxing treatments that leave the body feeling restored and rejuvenated,"*

Jennifer Brown, LMT

Swedish Massage -  
starting at \$75

Deep Tissue Massage

Hot Stones

Facials

Waxing Services

Foot Scrub

Cupping Therapy

Athletic Tapping



Website - <https://www.vagaro.com/boundlessbodymassageandmovementllc>

Phone - (828) 689-9110

Email - [boundlessbody.lmt@gmail.com](mailto:boundlessbody.lmt@gmail.com)

Book online - [boundlessbodylmt.com](http://boundlessbodylmt.com)

# Hicks Real Estate Group<sup>60</sup>

Your Wolf Laurel

*“in the gate”*

Realtor and Property Manager

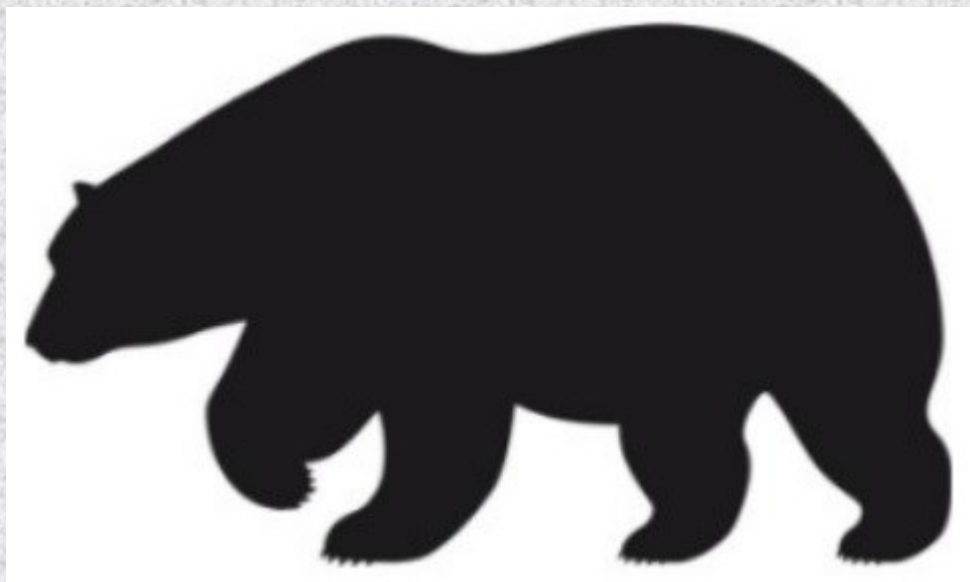


<https://www.hicksreg.com/>

Call or Text Mary Lou Hicks  
828-606-2108

Firm C26238 / Agent 290716

# BLACK BEAR REALTY



**Serving the Wolf Laurel Area**  
**For 21 years**

**Our Experienced Brokers  
will sell your property!**  
**List your home or lot now!**

**CONTACT US:**

**Call 828 206-4604**

**Or 828 689-2056**

**Email [blackbearrealtyinc.com](mailto:blackbearrealtyinc.com)**



# Wolf Laurel Specialists - Our 27th Year!

The only local, brick & mortar firm

Open 6 days/week

Full Vacation Rental Services

Lots of Foot Traffic

There is No Substitute for Experience



Dinah Carver

[WolfMountainRealty.com](http://WolfMountainRealty.com)

828 680 9777

383 Wolf Laurel Rd

Mars Hill, NC 28754

*A Quarter Mile from the Security Gate*



Connie Carver





## LISTED IN YOUR NEIGHBORHOOD



Welcome back to the Hill. If you are wondering what your property values are at this time of unprecedented sales in Wolf Laurel, please come visit me at the office for a cup of your favorite libation.

Multiple Properties For Sale, Wolf Laurel



*Carrie Lee Hoffman*

*828-712-5432 (Cell)*

*828-689-4422 (Office)*

[carrieleehoffman@gmail.com](mailto:carrieleehoffman@gmail.com)

## Advertising Information For TOB

### 2022 Ads - Half page \$65, Full page \$80

#### Notes:

- 1) Editions are scheduled to be published on the 1st of July and November.
- 1) Placement of an Ad in the TOB results in the Ad also being posted on the WLPOA website.

#### 2) Ad fees:

##### Half page:

1st Ad - \$65

2nd - \$55

##### Full page:

1st Ad - \$80

2nd - \$70



#### Remit to:

Larry Veatch  
263 Lucas Ln  
Mars Hill, NC 28754  
or [PayPal.Me/larryv8](https://www.paypal.com/paytoemail/larryv8)

For Ad space and information contact  
Larry Veatch at [larryv8@gmail.com](mailto:larryv8@gmail.com)  
or 352-359-0071

Thank You for your service to the Wolf Laurel community.