

Top of the Bald

Spring 2024

*Brought to you by the WLPOA
Board of Directors and the WLPOA staff.*



Top of the Bald - Table of Contents

Page 1 of 3

[Click on item to navigate to page](#)

[WLPOA Board of Directors and Information.... Page 5](#)

[WLPOA & Village Club Staff 6](#)

[President's Message 7](#)

[WLPOA Committees 8-9](#)

[Editor's Notes 10](#)

[Village Club Event Pix / Activities 11-15](#)

[WLCC Hospice Fern Sale 16](#)

[Village Club's Book Club 17](#)

[WLPOA Library Report 18-19](#)

[WL Historical Society 20-23](#)

[WL Country Club 24](#)

(continued)



Top of the Bald - Table of Contents
 Page 2 of 3
 Click on item to navigate to page

Appalachian Barn Alliance 25

Blast from the Past 26-27

Hatley Pointe 28-29

Ebbs Chapel 30-33

Hiking with the Wolf Pack..... 34-35

North Carolina Wildlife Commission 36-37

Carolina Mountains Literary Festival 37

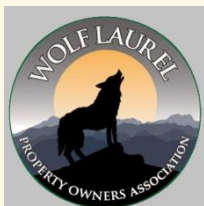
Grow Butterflies 38

Nextdoor Pix/Notice 39-40

WLPOA & Village Club Links..... 41

TOB Advertisers (see next page) 42-54

(continued)



Top of the Bald - Table of Contents

Page 3 of 3

Click on item to navigate to page

TOB Advertisers

Pages 42-53 (Bold = new listing)

◇ <u>Affordable Tree Care</u>	43
◇ <u>Wolf's Corner Plaza, LLC</u>	44
◇ <u>Wolf's Corner Spring Fling!.....</u>	45
◇ <u>Precision Restoration Services</u>	46
◇ <u>Wolf Mountain Realty</u>	47
◇ <u>Mike Whitt Maintenance</u>	48
◇ <u>Bailey Mt Home Fitness</u>	48
◇ <u>Jay Dawes Construction.....</u>	49
◇ <u>Akut-Abuv.....</u>	50
◇ <u>Branden Smith Landscaping & Hardscaping</u>	51
◇ <u>Hill's Plumbing</u>	52
◇ <u>Inner Wolf Retreat Space</u>	53

Listing does not imply recommendation

Wolf Laurel Property Owners Association (WLPOA)

Board of Directors:

Bob Hicks - President

Carl Larrabee - Vice President

Theodore Meyer - Secretary

Robert Lahr - Treasurer

Natalie Morris

Rick Zinter

Doug Orman

Steve Wilcox

Lynn Cagney

Scott McCaleb

Cary Monroe

John Brackett - Immediate Past President



Website: www.wolflaurelpoa.com

BY-LAWS OF THE WOLF LAUREL
PROPERTY OWNERS ASSOCIATION, INC

Article II. # 4. "To promote and/or arrange social, recreational,
and educational activities for all members."

WLPOA & Village Club Staff

WLPOA Director: Liz Benson - liz@wolflaurelpoa.com, 828-689-9229

Seasonal Village Club Manager: George Selman
george@wolflaurelpoa.com, 828-689-4089

Programs and Events Coordinator: Caitlin Bush
caitlin@wolflaurelpoa.com, 828-689-4089



Other VC Staff:

Donna Dickey
Paul Dickey
Carol Jones
Dan Kaufman
Theo Meyer
Walt Liebert

WLPOA:

91 Village Lane
Mars Hill, NC 28754
828-689-9229

Editorial Committee

TOB Editor/Publisher
and Webmaster:
Larry Veatch,
larryv8@gmail.com

Betsy Browne	Rich Ashley
Ron Metcalf	Bob Hicks
Lynn Cagney	Rick Zinter

[Have a great Season!](#)

The WLPOA office frequently receives questions about WLRMS;
Any WLRMS questions should be addressed to WLRMS at
828-680-9162, or <https://www.mygreencondo.net/wlrms/index>

President's Message

Dear neighbors and friends -

“Breaking News.....”: the moon blocks the sun!; snow in April!; baby bears run amok!....and the merry month of May hasn't even arrived yet!

Yes, it's an amazing and complex world, but tried-and-true routines continue. A full season of events and activities is being planned, and there will (hopefully) be something to appeal to everyone's tastes and interests. WLPOA is hard at work making sure every amenity is 'ship-shape', and very soon you will see site preparation and equipment arrival for a new playground. Although our staff is fully committed to making 2024 a great season, there are also opportunities for community members to volunteer - if you have an interest, or a skill, or just want to be helpful, please don't be shy.

Those of you who've lived in Wolf Laurel for any length of time know that our remoteness (which is often felt to be a positive aspect of our community) can sometimes make it more difficult to get timely services when things need fixing. Our Package Cabin is a prime example. New doors have been ordered, but are not yet installed; new cameras (for inside and out) are 'on the way'; updated electrical work is in process; and.....(drum roll!).....curb barriers are finally IN PLACE - Yea! Slow and steady can be frustrating, but we soldier on (even though we are not soldiers) - and we appreciate your continued input and patience.

We are also working to update our website, so all information about the POA and the Village Club is accurate, clear, and consistent. Besides our weekly eblasts, you will find additional information on the website about upcoming events and programs, plus reminders about scheduled activities. We hope you will take advantage of the many ways your POA makes your time on the mountain enjoyable.

And finally, if you've seen any of the various social media updates, there is lots of activity happening at Hatley Pointe. The presence of an 'up-and-running' commercial enterprise inside the gate is an exciting prospect for the whole community, but it also can create worry....big change always does. We urge you to follow the news, avoid rumors, and ask questions if there is uncertainty.

Have a warm & wonderful spring; a sunny & glorious summer - 'B-where of duh bears'.

Regards to all,

Bob Hicks
bobhicks@cheerful.com

P.S. Thanks to those of you who have reached out to me privately on a number of topics of concern.





WLPOA - Article IX By-Law Committees

Executive:

Chair: Bob Hicks, *President*
 Carl Larrabee, *Vice President*
 Theodore Meyer, *Secretary*
 Bob Lahr, *Treasurer*
 Ex Officio: John Brackett

Finance:

Chair: Bob Lahr (Treasurer)
 Fred Tygart
 Earlene Shofi
 David Smith
 Rick Zinter

Audit (Compilation):

Chair: Bob Lahr (Treasurer)

Village Club (Amenities):

Chair: Mary Lovley
 Co-Chair: Earlene Shofi
 Programs & Events Coordinator:
 Caitlin Bush
 Lori Wyman-Macaulay
 George & Becky Shennan
 Nancy & David Schmidt
 Jeri Magg
 Joanne Wit
 Marnie Sullivan
 Natalie Morris
 Leigh Ann Roseberry
 Greg Smith
 Rick Zinter
 Kevin Flanagan
 Steve Wilcox
 George Selman
 Sandy Skypek

Membership:

Chair: Liz Benson (WLPOA Director)
 Lynn Cagney
 Rick Zitner

Facilities:

Chair: Carl Larrabee (Vice President)
 Fred Tygart
 Bill Aimone
 Gregg Smith
 Becky Shennan (Pickle Ball)

Facilities Subcommittee - Village

Beautification:

Chair: *Vacant*
 Laura & Tom Conard
 Steve Wilcox
 Earlene Shofi
 Theo Myer
 Doug Orman
 Scott Weaver

By-Laws and Legal:

Chair: Bob Hicks (President)
 Theo Meyer
 Fred Tygart

Long Range Planning:

Chair: Doug Orman
 Liz Benson (Membership)
 Bob Lahr (Treasurer)
 Steve Wilcox
 Carol Jones (VC Director)
 Carl Larrabee (Facilities)
 Bob Hicks (By-Laws & Legal)

Election: (Verify ballots)

Chair: Liz Benson (WLPOA Director)
 Earlene Shofi



AD HOC COMMITTEES

Human Resources:

Chair: Earlene Shofi
 Bill Aimone
 Bob Hicks
 John Brackett

Library:

Director: Yvonne Carignan
 Bob Hicks

Nominating:

Chair: Leigh Ann Roseberry
 Natalie Morris
 Lori Wyman Macaulay
 Larry Carlson

Playground Planning and Funding:

Chair: Janis Larrabee
 Earlene Shofi
 Lynn Cagney
 Doug Orman
 Theo Meyer

Rental:

Chair: Doug Orman
 Theo Meyer
 Lynn Cagney
 Scott McCaleb
 Elliott Caldwell
 Rick Zinter

Top of the Bald:

Editor: Larry Veatch
 Editorial Board:
 Rich Ashley
 Betsy Browne
 Lynn Cagney
 Ron Metcalf
 Rick Zinter
 Bob Hicks

Webmaster:

Chair: Larry Veatch

WLPOA Package Annex:

Chair: Steve Wilcox
 Carl Larrabee
 Theo Meyer
 Earlene Shofi
 George Selman
 Fred Tygart
 Jim Howes
 Walt Leibert

Wolf Laurel Country Club Collaboration:

Chair: John Brackett
 Steve Wilcox
 Theodore Meyer
 Bob Hicks
 Bob Lahr

Editor's Notes

Cover photo - from Lucas Lane in '22

Digital versions of the TOB are available at [https://
www.wolflaurelpoa.com](https://www.wolflaurelpoa.com).

Printed copies of the Top of the Bald are available on Amazon.

Advertising featured in the TOB does not imply endorsement.

For advertising in TOB email larryv8@gmail.com

TOB feedback, comments, and suggestions are welcome - larryv8@gmail.com

WLPOA Website comments / suggestions / questions - larryv8@gmail.com



VILLAGE CLUB EVENTS WINTER PIX - GOOD FRIENDS, GOOD FOOD



Village Club Notes

Wolf Laurel POA Office Hours:
May thru Sept. - Mon-Fri 9am-4pm

Village Club Amenities Hours:
May (opens Memorial Weekend) 10am-7pm
June: 10am-7pm
July: 10am-8pm

Follow us on Facebook:

<https://www.facebook.com/groups/342942392454360>

Spring & Summer Seasonal Weekly Activities and Programs

- * Group Fitness
- * Tai Chi
- * Zoom Yoga
- * Pickleball
- * Women's Tennis
- * Men's Tennis
- * Craft and Gab
- * Samba
- * Monday Night Potluck
- * Friday Night Appetizers
- * Yappy Hour



Disclaimer: Please note all activities, programs, and events are at your own risk.

Starting in May...

Zoom Yoga, Tai Chi, and Wolf Pack Hikes will continue as currently scheduled.

Pickleball will begin May 1st at 10:00 AM on Mondays, Wednesdays, & Fridays and at 2:00 PM on Sundays.

Samba will begin May 3rd and continue on Fridays at 1:00 PM.

Weekly **Friday Night Appetizers and Monday Night Potluck** will kick off with a "Cinco" de Mayo Party on May 3rd

Dining Out with Friends will be every 2nd and 4th week of every month beginning in May.

An organized group ride for the **Virginia Creeper Trail** is being organized over Memorial Day weekend.

Village Club Updates

Madison County Hospice Boston Fern Sale

The Wolf Laurel community's annual Boston Fern sale for Madison County Hospice has begun! Pre-order your Boston Fern by Thursday, **May 16th**, for just \$25 by email Crellin Byrd at crellinjb@gmail.com, and help support your local nonprofit healthcare organization. The ferns will be available for pickup on **Thursday, May 23rd** on the front porch of the Wolf Laurel Country Club. This program is open to all Wolf Laurel residents. (See page 16.)

The Virginia Creeper Trail

This bike ride provides a 34-mile passage through the Southwest Virginia mountains. Join the Village Club on Saturday, May 25th, as we team up with The Bike Station for the ultimate Creeper Trail experience. Participants will travel to Damascus, Virginia where they will be shuttled to Whitetop and ride rented bicycles down a 17-mile easy and hard-packed gravel road, stopping midway for a picnic-style lunch. This event costs \$46.15 per participant (plus gas money for the drivers of those carpooling) and is a full-day event. For more information, or to RSVP (required), please contact Caitlin Bush at caitlin@wolflaurelpoa.com. This event is for Village Club members only. (See next page.)

Independence Day Celebration

For you early planners out there, the Wolf Laurel POA's Independence Day Celebration will be held on Friday, July 5th, beginning at 7:00 PM this year. More information, including ticket sales, will be announced at a later date. For more information, contact Caitlin Bush at caitlin@wolflaurelpoa.com.

Kids' Camp

The 2024 Wolf Laurel Kids' Camp will take place from Monday, July 8th, through Friday, July 12th. The Village Club is seeking volunteers: Teachers, Senior Counselors, and Junior Counselors to help organize and monitor this year's campers. Volunteers Needed; Our camp is all about fun and friendship and we're asking for your help to make that happen! For more information, contact Caitlin Bush at caitlin@wolflaurelpoa.com.

Artist of the Month

Swing by the Community Center during the months of April and May and admire the beautiful paintings and photographs for sale by this month's local artist, Carol Kinsey. Are you interested in displaying your art? We are currently looking for local artists to fill our glass showcases with jewelry, pottery, photographs, etc. that are for sale. (The WLPOA does not collect space fees or commissions.) For more information, contact Caitlin Bush at caitlin@wolflaurelpoa.com.

WOLF LAUREL

Village Club

VIRGINIA CREEPER TRAIL

— *bike ride* —

Join the Wolf Laurel Village Club on an easy, downhill 17-mile ride through the Southwest Virginia mountains along the Creeper Trail.

\$46.15/person includes a one-way shuttle transport from Damascus to Whitetop, bicycle, helmet, and a repair kit. RSVP is required to Caitlin Bush at caitlin@wolflaurelpoa.com

Saturday

May 25th

8:00 AM to 6:00 PM





THE VILLAGE CLUB
PRESENTS

CINCO DE MAYO

COMMUNITY CENTER
MONDAY, MAY 6TH
STARTS AT 6:00 PM

Please bring a Mexican-inspired dish to share
and BYOB

The Village Club will provide soft drinks/water,
paper products, and utensils

2024
WOLF LAUREL COMMUNITY ANNUAL
MADISON COUNTY HOSPICE
BOSTON FERN SALE



PREORDER BY
MAY 16th

PREORDERS ONLY - \$25 Each

PICKUP ON MAY 23 AT WLCC


EMAIL ORDER TO CRELLIN BYRD

crellinjb@gmail.com - QUESTIONS – 954-806-1902

Wolf Laurel POA Village Club's Book Club

Summer Book Club - Reading List

Selected by Village Club members, join us this summer as we discuss each book from the this summer's reading list (below). Meetings will be held at the Village Club Pavilion (unless otherwise noted). For more information, contact Karen Gerry at kgerry48@aol.com.


 Wolf Laurel
 Village Club's

BOOK CLUB

JOIN US AT THE PAVILION
 2:30 PM

06/20 - "MAIDEN VOYAGE"
 BY TANIA AEBI (LED BY JOHN FORD)

07/11 - "PERSONAL LIBRARIAN"
 BY MARIE BENEDICT (LED BY MICHELE HUNT)

08/01 - "REMARKABLY BRIGHT CREATURES"
 BY SHELLEY VAN PELT (LED BY STEPHANIE MACWILLIAMS)

08/22 - "LADY CLEMENTINE"
 BY HEATHER TERRELL (BY FRENCHIE RICHARDS)

09/12 - "THE SECRET LIFE OF SUNFLOWERS"
 BY MARTA MOLNAR (BY SUSAN SHEPHERD)

10/03 - END OF SUMMER PARTY

CONTACT KGERRY48@AOL.COM

Made With PosterMyWall.com

TWENTIETH CENTURY

1960s

The Help

by Kathryn Stockett

1950s

Where the Crawdads Sing

by Delia Owens

WORLD WAR II

The Boy in the Striped Pajamas (appropriate for young readers)

by John Boyne

All the Light We Cannot See

by Anthony Doerr

Fall of Giants (The Century Trilogy, #1)

by Ken Follett

The Nightingale

by Kristin Hannah

Lilac Girls

by Martha Hall Kelly

The Book Thief

by Markus Zusak

THE GREAT DEPRESSION

Water for Elephants

by Sara Gruen

The Four Winds

by Kristin Hannah

To Kill a Mockingbird

by Harper Lee

Before We Were Yours

by Lisa Wingate

1920s

A Gentleman in Moscow

by Amor Towles

NINETEENTH CENTURY

American Civil War

March

by Geraldine Brooks

The Red Badge of Courage

(Classic Fiction)

by Stephen Crane

Cold Mountain

by Charles Frazier

Gettysburg (and other Civil and Revolutionary War novels)

by Newt Gingrich

Gone with the Wind

(Classic Fiction)

by Margaret Mitchell

The Last Full Measure

by Jeff Shaara

Killer Angels

by Michael Shaara

ANTEBELLUM

The Underground Railroad

by Colson Whitehead

REVOLUTIONARY WAR

King's Mountain

by Sharyn McCrumb

EIGHTEENTH CENTURY***Outlander (Series)***

by Diana Gabaldon

SEVENTEENTH CENTURY***Girl with a Pearl Earring***

by Tracy Chevalier

SIXTEENTH CENTURY***The Plantagenet and Tudor Novels***

by Philippa Gregory

Wolf Hall (Thomas Cromwell, #1)

by Hilary Mantel

MIDDLE AGES***World Without End***

(Kingsbridge, #2)

by Ken Follett

ROMAN ERA***Eagles of Empire Series***

by Simon Scarrow

A.D. Chronicles Series

by Bodie Thoene

Wolf Laurel Historical Society

Wolf Laurel's Diamond Jubilee:

Wolf Laurel Historical Society Announces 2024 Programs

Diamond Jubilees mark sixty years since consequential events. They are times to appreciate todays by seeing, by remembering, at their best by a kind of reliving of pasts. Yes, it is time for a Diamond Jubilee: looking back from our lives today among these beautiful mountain ridges, streams, skies, and vistas to when Wolf Laurel was just a vision sent on its way by earlier generations. On June 1, 1964, C. P. "Bud" Edwards completed his purchase of the 4900 wooded acres above the stately Buck House in the corner of Yancey County NC and Unicoi County TN. When combined with the over 1100 adjacent acres he had purchased in the months before in Madison County NC, he had assembled the nearly 6000 acre mountain playground that he would soon call *Wolf Laurel Boundary*. So, **Happy Birthday!** Wolf Laurel.

We hope that everyone will join us this summer to celebrate with programs to learn more about the past of this wonderful place, assisted by those who remember and help us imagine the roots of the specialness that we share today. We have many activities planned.

◆ **A Birthday Party! Wednesday, June 5th, 4 PM. Wolf Laurel Community Center Pavilion, 91 Village Lane.**

To begin, let's Celebrate! All on the mountain are invited to a birthday party for Wolf Laurel. How about a piece of tasty birthday cake to start it off? We will lift a glass of the beverage of your choice to Bud Edwards and all who have built this community for sixty years. Perhaps a fresh mountain breeze will blow out all the candles. This event will be co-sponsored with the Wolf Laurel Property Owners Association. The annual meeting of the Wolf Laurel Historical Society will follow with reports on the Society's activities in this birthday year and election of officers for 2025.



Photo by Donna Cottingham

◆ **A History of Appalachian Music, with William Ritter, Appalachian musician and songkeeper. Tuesday, July 9th, 7 PM. Ebbs Chapel Performing Arts Center, 281 Laurel Valley Road, Mars Hill.**

This program looks back even before Wolf Laurel to when these mountains rang with the sounds of ancient music. Passed down through voices in the fields, in the kitchens, on the porch, with and without fiddle, guitar, or banjo, the Southern Appalachians were the home to a musical tradition that stretched back across the ocean to Ireland and Scotland and even old England. Our program focuses on that music.



(continued)

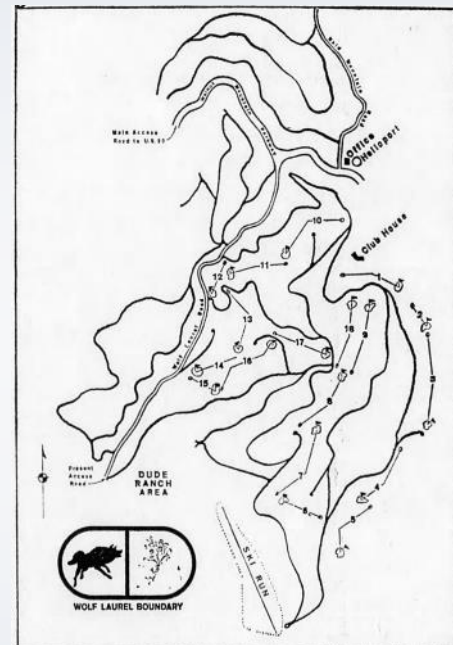
Wolf Laurel Historical Society

William Ritter was born and raised in these mountains. He plays the fiddle and guitar, and sings the true traditional music of the Southern Appalachians. He describes himself as a “songkeeper” in the spirit of the “songcatcher” tradition. During his time as a student at Appalachian State University, William also made the connection between old-time traditional music and heirloom seed saving, both of which are having a renaissance. “Keepers of both traditions,” he notes, “carry stories and memories,” their oral traditions. Today William raises heirloom plants on his farm in Mitchell County and performs throughout the Southern Appalachians. He will perform and share the stories of many of those traditional songs and tunes to help us celebrate the history of our region captured in its trademark music.

◆ **The Early Wilderness Days: Reminisces of the Young Wolf Laurel with Suzanne Orbaugh, David Pendleton, and Mary Edwards. Wednesday, August 7th, 4 PM. Wolf Laurel Community Center Pavilion, 91 Village Lane.**

In 1964, Wolf Laurel was a land for the young, eager to spend time in the wilderness of the high mountains near their homes in Tennessee and North Carolina. Bud Edwards’ first thought was a wilderness getaway for him and his buddies near their northeast Tennessee home. “Friends of Bud” they called themselves. But soon, their enjoyment of the rugged wilderness led Bud to import abandoned log cabins from North Carolina, Tennessee, and Virginia to be reconstructed log-by-log by master craftsman Clay Jenkins and his Southern Appalachian crew in what is today Settler’s Village behind the Wolf Laurel Community Center. In those cabins where their families could gather for weekends together, the Wolf Laurel community was born.

Suzanne Orbaugh and David Pendleton were the young children of Boots Duke and Barney Pendleton, two of those Friends of Bud. They will remember those early days of their families at Wolf Laurel, and the joys of young children with the freedom of the vast wilderness. Our third guest, Mary Edwards, was not only Bud Edwards’ lifemate, but his partner in the Wolf Laurel enterprise as well, instrumental in transforming the kind of private domain of a few families into a vibrant resort community where many came to find their own happiness in this wild place. Jim Klumpp, co-author of *A Treasure in the Appalachian Sky: A History of Wolf Laurel in Madison and Yancey Counties, North Carolina*, will interview these three early pioneers of Wolf Laurel who found those days in the near-trackless mountains some of the most memorable of their youth.



Kingsport Times, April 21, 1967, p. 14.

continued)

Wolf Laurel Historical Society

◆ **The History of Skiing at Wolf Laurel: After Fifty Years, A New Era, with Brenda Whitt, Johnny Goin, and Deborah Hatley. Wednesday, September 4th, 4 PM. Hatley Pointe Ski Lodge, 578 Valley View Circle**

Nothing exemplifies the continued evolution of Wolf Laurel after sixty years like the revitalization of our ski resort. Skiing on the open meadow of Big Stamp and within the Dude Ranch where Willis Branch met Wolf Laurel Branch were part of Bud Edwards' original vision of Wolf Laurel. Skiing began in the early 1970s on our current slopes. As a new era begins with Hatley Pointe Ski Area, we look back at the history of the sport of skiing at Wolf Laurel and forward to the new resort.

Our guests represent many experiences of Wolf Laurel Skiing. Brenda Whitt and her family skied Wolf Laurel slopes from nearly its first season. Johnny Goin came early to assist Wolf Laurel Resort's owner Fondren Mitchell in managing the winter ski season. They will recall their two perspectives on skiing during those early days. Deborah Hatley, whose company is completing the rejuvenation of skiing at Wolf Laurel, will celebrate the new era. Jim Klumpp will interview the three. Bring your own stories of our dominant winter sport.

Programs of the Wolf Laurel Historical Society are open to everyone without admission. You can support these free programs with your annual membership in the Society. Memberships are only \$20 for individuals and \$35 for families. Your membership supports the costs of programming and the other activities that preserve the history of Wolf Laurel.

◆ **Historical Society Publications and Decorations**

And in this Diamond Jubilee year, why not avail yourself of more of Wolf Laurel's history? The Society offers two books that will deepen your enjoyment of Wolf Laurel. *Upper Laurel and Her People*, by Delia Tipton Britain, tells the story of the families that settled the Puncheon Fork and Laurel Creek valleys cut through the highlands under Big Bald. Today you encounter many from those families as neighbors, craftsmen, and workers that make our lives fuller at Wolf Laurel. Ask for this book (\$20) at the Wolf Laurel Community Center or order directly from the Society.

A Treasure in the Appalachian Sky: A History of Wolf Laurel in Madison and Yancey Counties, North Carolina, by Jim Klumpp and Warren Johnson, tells the story of the first sixty years of Wolf Laurel in great detail. It is a story of how a mountain wilderness became an extraordinary setting for a community of people who created a wonderful mountain lifestyle. If you are new to Wolf Laurel, or have not yet read this history, this would be the perfect time to do so. Ask for your choice of hardcover (\$55) or paperback (\$30) at the Community Center or order from the Society.



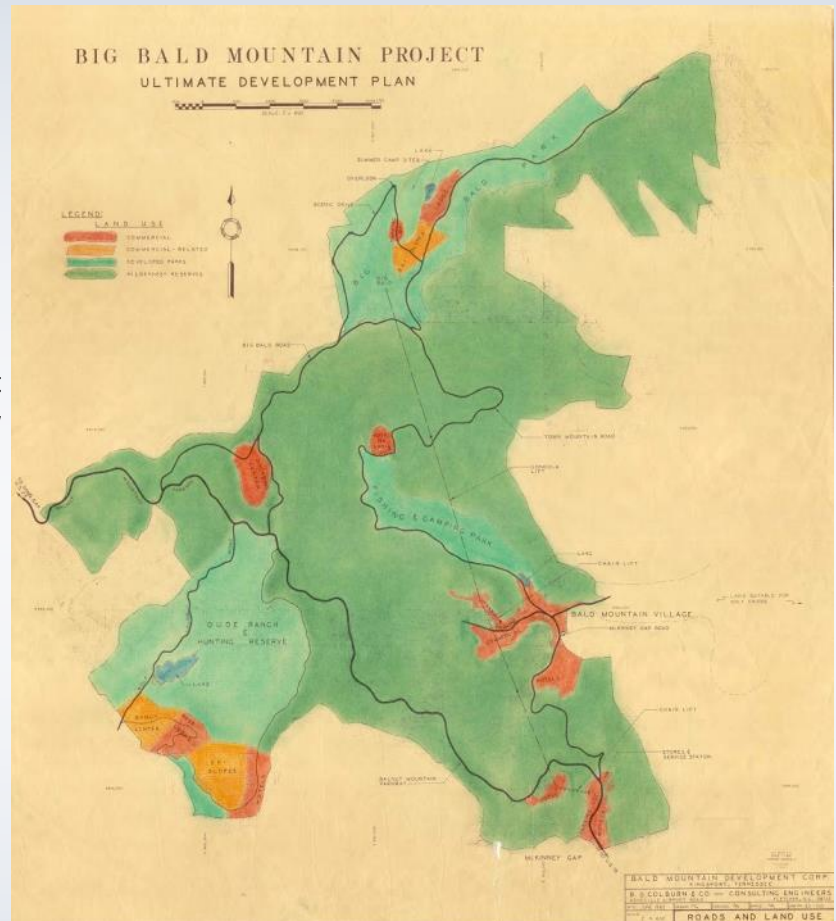
(continued)

Wolf Laurel Historical Society

This Diamond Jubilee is also the perfect time to bring Wolf Laurel history into your mountain home. Particularly appropriate is the reproduction of “The Ultimate Plan,” Bud Edwards’ 1965 vision of Wolf Laurel captured in a map. What were his dreams? What would he have built on your piece of the mountain? You will be fascinated by his dreams, sort the achieved from the unachieved, and have a conversation piece during this Jubilee year. The Society has reproductions in 30 by 30 inch 46# card stock suitable for framing, or in the same size in sealed plastic encapsulation. Either format is \$20 available from the Historical Society.

When the Historical Society was founded by Wolf Laurel residents in 1994, noted Asheville artist Gayle Tate was commissioned to paint his vision of the early days of the Willis Barn that is today’s Wolf Laurel Community Center. His original oil, “The Barn, c1890,” was purchased at auction, and today hangs in the offices of the Wolf Laurel Country Club. At the time, a numbered series print was produced from the oil painting. A few of those original numbered prints are available (\$30) through the Wolf Laurel Property Owners Association in the Community Center. All proceeds continue to go to supporting the activities of the Historical Society.

We hope you enjoy Wolf Laurel’s Diamond Jubilee year and will join the Wolf Laurel Historical Society to learn more about our community’s rich history through our programs and our publications.



◆ More information and how to join the Wolf Laurel Historical Society.

More information on our [Programs](#), [Publications](#), and Society [Membership](#) is available on the Society’s website: WLHistory.org. Also, there are [Wolf Laurel Stories](#) and the [Wolf Laurel Blog](#) with even more stories by local residents about the community. Webpages also offer instructions and forms to order publications or join the Society.

The **Wolf Laurel Historical Society** hopes to see you in 2024.



We are looking forward to another packed year of events at Wolf Laurel Country Club with parties, activities, and fun golf tournaments! As always, we welcome all from the mountain to join us in the Memorial Day celebration.

We will have the 2024 Memorial Day Service event on May 27, 2024 at 11:00 AM to commemorate our fallen war heroes in front of the WLCC clubhouse. This year's speaker will be Christopher C. Bresko, Lieutenant Colonel (Retired). LTC Bresko enlisted in the Army in June of 1983. After eleven years of enlisted service in both 7th Special Forces Group and the U.S. Army John F. Kennedy Special Warfare Center and Schools, he attended Officer Candidate School. LTC Bresko was commissioned as a Second Lieutenant of Infantry in January 1995. Chris served in many impressive command posts over his remaining years of active service, including Afghanistan, before retiring in 2020. This event is open to ALL who wish to attend and hope you can join us on this important day. This celebration will be followed by a barbecue at the clubhouse, presented by our new Executive Chef Ron Henry.

We also welcome ALL to the July 4th celebration the afternoon of July 5th, the same day as the fireworks at the Village. There will be our annual pet parade, music, barbecue, plus plenty of games and activities for the kiddos!! Festivities will begin at noon in front of the clubhouse, with the barbecue from 2:00 to 4:00. Flyers will be posted at the mailboxes with more details.

Kathleen "Kate" Freihofer,

WLCC Director and Chair, Events and Activities

Appalachian Barn Alliance's 4th Annual Art Gala

"A Pastoral Palette"

The Appalachian Barn Alliance will again partner with The Saints of Paints to host an arts celebration by 14 of Asheville area's finest artists on Friday, **May 31** from 5:30pm to 8pm. These two groups come together with a single purpose – to honor the barns of western North Carolina's heritage. Event details are at: <https://appalachianbarns.org/pastoral-palette-art-show-gala/> The location is the beautifully restored Ivy Building off Victoria Road in Asheville on the A-B Tech campus. Tickets for the Gala are \$50 each (\$45 for ABA members). TICKETS/ RESERVATIONS available by check or on the website (PayPal button) for the Friday, May 31 event. If you have questions, call 828 380-9146 or email info@appalachianbarns.org.

The Friday Evening Gala is a ticketed event offering samplings of food as well as complimentary wine and beer choices while mingling with the artists who will have several of their paintings for sale. Background music is provided by David Hughes. The event continues– the following day is free and open to the public– on Saturday, **June 1** with an opportunity to purchase the artists' works from 11am to 3pm.

Money raised for this event will benefit the work of the Appalachian Barn Alliance (a 501 c 3 nonprofit organization) in preserving the agricultural heritage of the Southern Appalachians. The current project is to reconstruct the two donated historic barns at the Smith Heritage Farmstead just outside of Mars Hill.

Press Release information from Sandy.Stevenson@appalachianbarns.org or 828 380-9146

BENEFIT ART GALA APPALACHIAN BARN ALLIANCE



A Pastoral Palette

MAY 31 & JUNE 1, 2024

Painting by Donny Luke

Blast from the Past - 1999

WELCOME BACK TO THE MOUNTAIN



TOP OF THE BALD

Wolf Laurel Property Owners Association
784 Wolf Laurel Road
Mars Hill, NC 28754

Bulk Rate
U.S. Postage
PAID
Mars Hill, NC
Permit No. 20

◆ TOP OF THE BALD ◆

Volume 12 Number 1

May 1999

President's Report... *by Bob Burns*

To those of you who spent the winter off of the mountain – welcome back. The winter was mild, however, we did receive approximately 64 inches of snow, including 6 inches on May 30.

Marvin English, Harvey English and Stacey Bailey literally kept the place open during the many snow and ice storms we had during this past winter. We cannot thank them enough for the hard and dedicated work they have each contributed to Wolf Laurel this year and past years. Thanks again to each of you!

As usual, our security folks also did an outstanding job. We want to thank Shag, Joe, Freddie, Larry, Paul and Sam for their dedication to Wolf Laurel. To our knowledge, no break-ins or vandalism occurred on the mountain during the winter months.

The ski resort seemed to stay open later than normal but the ski attendance was off from previous years.

If you haven't heard by now, the golf course has been purchased. It is member owned. The new name is Wolf Laurel Country Club. Additional information will be forthcoming in future issues of our newsletter.

The status of the four (4) lots severed out of the golf course boundary will be decided in a hearing on May 4, 1999, in the Federal Bankruptcy Court located in Asheville, North Carolina.

Wolf Laurel Property Owners Association has a new secretary. Her name is Joyce Christie, from Weaverville. She is also the new editor of the Top of the Bald. Joyce will be in the Homeowners' office two mornings a week, Mondays and Wednesdays or Thursdays from 9:00 to 12 noon. I hope you will all stop by the office in the coming weeks and welcome her to Wolf Laurel.

We want to express our appreciation to Joe and Millie for the outstanding job that they did for the past three years as editor of Top of the Bald. I know each of you will thank them personally for the dedication, hard work and professional job that they rendered for our community in the publishing of the Top of the Bald.



*A warm welcome
to all our
residents who
spent the winter
off of the
mountain.*

(Continued on page 3)

Blast from the Past - 1999

Calendar of Events

Festivals

DATE	WHERE	EVENT
Through May 16	Grove Park	A Sunset Mountain Spring. A new six-week festival at the Grove Park. Includes lavish indoor decorations and gardens plus floral contests and demonstrations, workshops, nature walks and the first ever "Gingerbread Gardens Competition"
Through May 2	Biltmore Estate	Festival of Flowers
Through May 24	Cradle of Forestry	Appalachian Spring Celebration
Through May 2	WNC Farmers Market	Spring Herb Days Festival
May 8	Folk Art Center	Fiber Day
May 28 - 30	Camp Ton-a-wandah Flat Rock	Black Mountain Music Festival
May 28 - 30	Camp Rockmont Black Mountain	Lake Eden Arts Festival (LEAF)
May 31	Carl Sandburg Estate	Carl Sandburg Folk Music & Poetry Festival
June 24 - August 8	Brevard Music Center	Brevard Music Festival

(Continued from page 3)
828-689-9229.

Homeowner Associations at Wolf Laurel:

(1). Our Homeowners' Association (WLPOA), sometimes called the Master Homeowners' Association; any homeowner or lot owner of Wolf Laurel can become a member.

(2). **Blue Mountain Homeowners' Association.** This association consists of several smaller associations as follows:

- a. The Villas Condo Project
- b. The Lodge Condo Project
- c. Overlook Village Subdivision
- d. Chestnut Village Subdivision
- e. The Cottages Subdivision (across from the Villas)

Many of WLPOA members are members of the above listed associations.

(3). **Wolf Laurel Roads and Security Homeowners Association.** This is the association that you pay your assessments to. Its function is to strictly administer and handle all activities regarding roads and security. There are seven directors for this association. Four are appointed by Bald Mountain Development Corporation and three are appointed by WLPOA.

Rescue on the Mountain: During one of the snow storms we had two lost hikers stranded up near the Bald. They had started hiking near Sam's Gap early during the day and much to their surprise, upon reaching the Bald, several inches of snow covered the ground. Being "somewhat lost", they decided to camp for the night since the weather was turning rough.

During the night an additional 6 or 8 inches of snow fell and the temperature plummeted. Search and Rescue was notified by one of the parents who had received a cellular telephone call from the "lost" saying they were somewhere up near the Bald.

Approximately 8 vehicles arrived to start the search around 9 a.m.. After 5 or 6 hours of searching, the couple was finally located up near the water tank facility off of Big Bald Road. I dare say they were two cold, happy hikers when the first rescue unit found them.

Sincerely,

Bob Burns, President WLPOA

Hatley Pointe

Hatley Pointe began as Wolf Laurel Ski Resort in the late 1960's. Later named Wolf Ridge Ski Resort, it was purchased by the English family in 1992. Many improvements were made to the resort including updating the base ski lodge, adding a second lodge at the top of the mountain, and opening additional skiable terrain on the back side of the slope along with two new lifts. Wolf Ridge was purchased on March 3, 2023, by Deborah and David Hatley and renamed Hatley Pointe. The name derives from the Old English definition of "Hatley" meaning, a woodland clearing on a hill.



To this point, Hatley Pointe has renovated the base ski lodge. Additions include a full-service restaurant "Smoke and Timber", cafe, full-service bar, retail space, VIP and public locker-room areas, and an upgraded rental area featuring all new rental equipment from Atomic, Salomon, and Elan. The updated lodge has been expanded to accommodate some of these new additions. On the slopes our crews have added more robust snowmaking

infrastructure, updating the mountain with new pumps, water and electrical lines, and 27 new Demac-Lenko snow guns. They have also refurbished two magic carpet lifts and given both chairlifts cosmetic and safety upgrades.



Hatley Pointe

For winter 2024-2025 Hatley Pointe will offer significantly improved man-made snow coverage to the mountain, allowing folks to ski more terrain for more of the winter season. This will be coupled with better lift access via RFID lift gates allowing for fewer lines and a more streamlined experience from guest arrival to getting out on the slopes. Plans for the upcoming season also include opening more trails.

Anyone looking for more information should visit our website, hatleypointe.com, or follow us on social media on Facebook or Instagram. Folks may also reach us directly with any inquiries via the contact information listed on our website.

Matt Rossetti



MATT ROSSETTI | Creative and Marketing Director



e: marketing@hatleypointe.com

p: 828-689-4111

w: hatleypointe.com



Ebbs Chapel Community Center Summer Programs

Ebbs Chapel Community Center serves Wolf Laurel and our nearby neighbors and friends. If you haven't seen the historic Ebbs Chapel School, there are many chances this summer. The school was constructed from Madison County field stone by the National Youth Administration (NYA) in 1940-42. The NYA was a program within the Depression era Works Progress Administration (WPA). NYA youth were recruited from the local area, providing them training in construction methods as they built the infrastructure for the community. They built many schools around the country, but this was the last that they completed before the NYA turned to construction projects for the war effort after the Pearl Harbor attack.



With the help of many members of the Wolf Laurel Community over the years, the Ebbs Chapel Community Center has revitalized the former school for entertainment, service, and as a venue for parties, birthdays, and anniversaries. Over the winter, donations from Wolf Laurel residents supported a "Thank You" Christmas Party for our volunteer firefighters and EMTs from the Ebbs Chapel Volunteer Fire Company and their families. The event was a great success. And residents are generously filling the donation box at the Wolf Laurel Community Center for the Ebbs Chapel Food Pantry. Two Wolf Laurel residents currently serve on the Upper Laurel Community Organization Board that operates the Community Center.

(continued)

Ebbs Chapel Summer Entertainment

This summer offers many opportunities for entertainment events at the Community Center. The Center is the closest venue to Wolf Laurel for great musical events.

Sunday, June 2, 4 PM. [The Kruger Brothers](#), sponsored by the aMadison County Arts Council, Ebbs Chapel Performing Arts Center. [Information and Tickets](#).

Tuesday, July 9, 7 PM. A History of Appalachian Music with [William Ritter, Applalchian musician and "songkeeper,"](#) sponsored by the Wolf Laurel Historical Society, Ebbs Chapel Performing Arts Center. Information. Free Event open to all..

Sunday July 28, 4 PM. [Nick Garrison Quintet](#), Jazz at Ebbs Chapel, sponsored by the Madison County Arts Council, Ebbs Chapel Performing Arts Center. [Information and Tickets](#).

Sunday, August 25, 4 PM. Carley Arrowood, sponsored by the Madison County Arts Council, Ebbs Chapel Performing Arts Center. [Information and Tickets](#).

Bluegrass
Hall of Fame
Inductee
Bobby Hicks
performs
with the
Tennessee
Bluegrass
Band at
Ebbs Chapel



In addition, Bluegrass in the Laurel, a series of concerts featuring various bluegrass performers will continue into the summer at the Performing Arts Center. Be sure and check the Ebbs Chapel website [events calendar](#) or the [facebook page](#) for updates on schedule.

(continued)

Ebbs Chapel Blackberry Festival

One of the highlights of the Wolf Laurel summer is the Blackberry Festival at Ebbs Chapel Community Center. Roam the courtyard enjoying the art, the crafts, the books, and the homespun skills of Upper Laurel neighbors. Buy a souvenir or a keepsake that will grace your Wolf Laurel home for many years. It's summer, so enjoy the fruits of local gardens. Find a bargain you cannot resist in the rummage sale from among a variety of gently used furniture, decorations, kitchen and household items, and clothing. Of course, one sure highlight of this festival is the blackberry treats -- jam, syrup, pies, and cobbler -- locally made the old-time country way. Take them home and enjoy till next year.



It would not be a mountain festival without music. Whether in person or via recording, the air is filled with the many sounds that enliven mountain living.

Then there is the eating. A full mountain breakfast is served beginning at 8 AM, and of course your homemade biscuits or your grits are topped with blackberry gravy made in the kitchen. If you sleep in, lunch begins at 11:30 AM and offers a similar menu of mountain cooking.

This year's [Blackberry Festival](#) is Saturday, July 20, from 8 AM to 2 PM. Put it on your calendar and plan to attend.

(continued)

Rummage Sale Appeal: Where to take your disposable treasures

One convenient way to support the Ebbs Chapel Community Center has the additional benefit of helping to clean out those items in your house that you had designated for donation. There is nowhere as close to Wolf Laurel as Ebbs Chapel to bestow the benefit of your donations.

Appropriate for donation are kitchen and household items, linens, furniture, music, children's toys, puzzles and games and garden items. Please, no electronics or clothes. For rummage sale donations, please call 828-206-4023 to arrange a time for dropping off your donations.

Other Ways to Support the Ebbs Chapel Community Center Activities

Other forms of donation help to support the non-profit Community Center and its programs. Clothing in good condition can be donated to our [Clothes Closet](#) any Saturday 9-11 while the Food Pantry is open. Please do not leave bags at the door to the Center. Food Pantry staff will assist with your donations.

And your donations to the [Food Pantry](#) can be dropped in the box inside the front door to the Wolf Laurel Community Center, 91 Village Lane. Or you can take them with your clothing donations.

Or you can volunteer to help with any of the activities at the Ebbs Chapel Community Center: helping with the Blackberry Festival, with the [Winter Wood Assistance for Seniors](#) program, donating books to the [Bijou Box Library](#), or other things that interest you. Or help pick up trash along Puncheon Fork Road with other Wolf Laurel residents in the [Adopt-a-Highway](#) program. To see a full list of the Center's activities check our website – [EbbsChapelCommunityCenter.org](#). And to volunteer click on the [volunteer](#) link.

Cash (or check) donations of any denomination are also welcomed to support the Center or its programs. Click the [donate](#) link on the website.

If you need a venue for a meeting, a large family get-together, or a party, contact the center about renting the [Events Center](#). Rental proceeds support the Center and rental is discounted for Upper Laurel residents.

Come join us this summer at the Ebbs Chapel Community Center for any of our activities and learn about the wide range of activities the Center offers.

Website: [EbbsChapelCommunityCenter.org](#)

The Ebbs Chapel Community Center is continuing our Bluegrass in the Laurel Concert Series this month with a May 25th 7 pm performance by Jonah Riddle and Carolina Express. This Concert Series seeks to celebrate local roots music in Western North Carolina and Upper East Tennessee and to help raise money for the Ebbs Chapel Community Center. If you could please help us get the word out about this upcoming event, we would greatly appreciate it!

Ticket Sales: <https://www.eventbrite.com/e/jonah-riddle-carolina-express-with-the-roan-street-ramblers-opening-tickets-887339756097?aff=oddtcreator>

Leslie Smith
Bluegrass in the Laurel Concert Series
Ebbs Chapel Community Center



Hiking and Walking in the Wolf Laurel Area

Wolf Pack Hikes 2024

Hikes can be outside or inside the Wolf Laurel Gates, departing at 8:00 a.m., unless otherwise noted.

Schedule can change if weather conditions are unfavorable or trail conditions are unsuitable at the time. Emails will provide updates.

Where: Meet at location indicated, usually at Village/Community Center Parking Lot, but may be at another location.

When: 8:00 a.m., unless otherwise noted. 1st, 2nd, 4th, and 5th Tuesdays, June 1 through October 1.

Inclement Weather: Plan to go in fog and cancel in heavy rain.

Ride Share: Drivers willing to shuttle will lift their trunk. Riders will offer driver compensation for gas.

Bring: Water, snack or lunch, walking sticks, bug spray, sunscreen, hat.

Walk in the Woods 2024

All walks are inside Wolf Laurel gates, departing at 9 am. Schedule can change if trail condition is unsuitable at the time. Emails will provide updates.

Where: Meet in Fitness Center parking lot for car shuttling to trailhead. See emails for changes for meeting locations

When: 9 a.m., 4th Saturday, 3rd Tuesday

Full moon walks to Big Bald will be on the day of the full moon timed according to sunset

Inclement Weather: Plan to go in fog and cancel in heavy rain

Ride share: Drivers willing to shuttle will lift their trunk

Bring: Water, snack, walking sticks, bug spray, sunscreen, hat

Mary Lovley
crazy4bunnies@yahoo.com

See next page for schedule thru early July.

Hiking and Walking Schedule

WP or WITW	Day	Date	Time Leaving Meet Up Location	Meet Place	Hike Leader(s)	Hike Name	Distance of Hike in Miles	Distance from Wolf Laurel	Difficulty	Outstanding Geographical Features	Link to Directions to Trail Head or Parking
Walk in the Woods	Tuesday	5/14/2024	9:00 a.m.	Fitness Center parking lot	Yvonne Carignan	Bald Mt. Creek loop	1.3	N/A	rocky and steep in spots	wildflowers	Town Mt. Rd parking
Walk in the Woods	Saturday	5/25/2024	9:00 a.m.	Fitness Center parking lot	Yvonne Carignan	Weaver Knob loop	2.5	N/A	steep steps down, steep up	Rock formations	Weaver Knob parking
Wolf Pack	Tuesday	6/4/2024	8:00 a.m.	Tentative: Village/Community Center (Carpool)	Tentative: Ann Marie Brown	Tentative: Rattlesnake Lodge Trail	3.9	30-34 miles, 44-51 minutes	Moderate	Elevation gain, 882 feet. Dogs are welcome, but must be on a leash.	Bull Gap Trailhead - Rattlesnake Lodge Trail, 667 State Rd 2109, Weaverville, NC 28787 https://maps.app.goo.gl/gSpGzt9mWh49X93i8
Walk in the Woods	Tuesday	6/11/2024	9:00 a.m.	Fitness Center parking lot	Yvonne Carignan	Waterfall Trail	1.6	N/A	rocky, downhill, steep in spots		Waterfall Parking. Car drop: STPAL lot
Wolf Pack	Tuesday	6/18/2024	8:00 a.m.	Village/Community Center (Carpool)	Kathy and Mark Willow	Rocky Fork State Park (with side trail)	TBD	17 miles, 27 minutes	Easy to Moderate	Walk along river, mostly shady	https://maps.app.goo.gl/dpVooir1P7CgB2GF8
Walk in the Woods	Friday	6/21/2024	8:30 p.m.	Big Bald Parking Lot	Yvonne Carignan	Big Bald in and out	1.2	N/A	steep climb up and down	fullmoon rise 9:04, sunset 8:50	
Wolf Pack	Tuesday	6/25/2024	8:00 a.m.	TBD	TBD -- Need Volunteer Hike Leader	TBD	TBD	TBD	TBD	TBD	TBD
Wolf Pack	Tuesday	7/2/2024	8:00 a.m.	TBD	TBD -- Need Volunteer Hike Leader	TBD	TBD	TBD	TBD	TBD	TBD
Walk in the Woods	Tuesday	7/9/2024	9:00 a.m.	Fitness Center parking lot (walk to trailhead)	Yvonne Carignan	Nature Trail/Hanging Rock loop	2	N/A	The main part of the trail is easy, but there is one steep section on a narrow trail		

July thru October schedule will appear in the summer TOB

North Carolina Wildlife Resources Commission

It's rare to spot an Appalachian cottontail rabbit in the wild. They live in the high elevations and steep topography of the western North Carolina mountains and are easily confused with their slightly larger close cousin, the Eastern cottontail rabbit.

They're also listed by the U.S. Fish and Wildlife Service as a species of concern, classified as vulnerable throughout most of its range, and listed by the North Carolina Wildlife Resources Commission (NCWRC) as a rare species.

It's also considered a species of greatest conservation need (a classification used in states' Wildlife Action Plans), and a knowledge gap species – meaning we don't know much about this elusive rabbit.



And it's currently unknown whether a highly infectious and fast-spreading virus (RHDV2) may be impacting the population. That's why NCWRC has recently contracted with the research group, Tangled Bank Conservation, to perform a study of Appalachian cottontails. The goal is to determine impacts to this species that may pose threats to their survival. NCWRC will use this information to develop a management plan to protect them.

Researchers will conduct scat surveys (animal waste) to learn where the species exists in the North Carolina mountains and where it coexists with Eastern cottontails. Eastern cottontails may impact Appalachian cottontails through direct competition, hybridization, and disease transmission.

"At this time, we have no evidence of RHDV2 here in North Carolina, based on our current monitoring efforts," said Andrea Shipley, NCWRC's mammalogist. "However, we believe habitat loss and habitat fragmentation have most significantly impacted this species and could leave them vulnerable to becoming sick."

Appalachian cottontails use the thick cover of spruce fir forests for protection from predators. The state has seen a reduction in those trees due to disease and introduced insect pests. There are only patches of their preferred habitat remaining. This forest fragmentation creates isolated populations with low genetic diversity and less resiliency to a disease such as RHDV2.

"We are concerned about this rabbit species' long-term survival because it's dependent on a forest type that is declining, and small, isolated populations are vulnerable to quickly spreading diseases such as RHDV2, which is why we deem this study to be 'time sensitive,'" said Sara Schweitzer, Ph.D., assistant chief of the NCWRC Wildlife Management Division's Wildlife Diversity Program.

"The results from this survey will help us create management recommendations to conserve Appalachian cottontails, prevent hybridization between Eastern and Appalachian cottontails, and reduce the risk of RHDV2 entering Appalachian cottontail populations."

The project is enhanced through public support. "With much of North Carolina's land in private ownership, we are encouraged by the engagement of several private landowners in the surveys as well as their concern for the species," said Schweitzer.

Those who visit N.C.'s high western elevations may want to keep a keen eye along the grassy roadsides and the edges of woodland openings for a chance to spot the rare Appalachian cottontail.

Learn more about the Appalachian cottontail at: <https://www.ncwildlife.org/Learning/Species/Mammals/Appalachian-Cottontail-Rabbit>

North Carolina Wildlife Resources Commission



Songbird young (chicks) will hatch throughout the spring. Knowing the difference between a nestling and a fledgling bird can help you make the right decision if a young bird is found on the ground. Nestlings don't have feathers yet and cannot survive outside of their nest for long. Return nestlings to the nest as quickly as

possible, and if the entire nest has fallen, place it back in the tree or construct a makeshift nest. Fledglings have their feathers and are able to walk, hop or fly short distances. They may appear helpless, but in fact have left the nest and are learning to fly. Fledglings should be left alone unless they are obviously injured or in immediate danger. In those less common cases, contact a licensed rehabilitator. Keeping cats inside and dogs on leashes also help these young birds make it through this vulnerable learning stage. <https://www.ncwildlife.org/>



Carolina Mountains Literary Festival Unveils Star-Studded Lineup for 2024

Burnsville, NC – March 27, 2024 – The Carolina Mountains Literary Festival is thrilled to announce our highly anticipated lineup for the 2024 Carolina Mountains Literary Festival! Our selection committee has meticulously curated a diverse array of talented authors in the Fiction, NonFiction, Memoir, Poetry and YA genres. We are particularly delighted to announce our esteemed Keynote Speaker, the New York Times Best Selling Author, Angeline Boulley. She has captivated readers with her novels "The Fire Keeper's Daughter" and "Warrior Girl Unearthed." Her powerful storytelling and exploration of Indigenous culture have garnered widespread acclaim, making her a fitting choice to headline this year's event.



The Carolina Mountains Literary Festival invites book lovers, writers, and enthusiasts to join them for a weekend of literary celebration and exploration. Stay tuned for updates on tickets, workshop sales, event schedule, and special programming in the coming months.

For the full lineup with author biographies and book selection, visit our website at www.cmlitfest.net

Grow Butterflies in Your Herb Garden

By Donna Cottingham

If you have ever noticed that something in your herb garden seems to be devouring your dill, parsley or fennel, you may be inadvertently boosting the Eastern Black Swallowtail butterfly population. Butterflies are very specific about choosing the host plant on which to lay their eggs. Female Black Swallowtails will only lay eggs on dill, fennel, parsley or Queen Anne's lace. Nothing else will suffice. In preparation for the task of metamorphosis, caterpillars become eating machines, and several of them together may devour an entire plant. In order to support butterflies *and* also have enough herbs for your own use, try planting extra herbs for sharing. If you are interested in attracting butterflies to your flower garden, plant the herbs among your flowers and watch what happens. You should be able to witness the complete butterfly life cycle in only a few weeks.

*Eastern Black
Swallowtail Caterpillar*



*Adult Eastern Black
Swallowtail Butterfly*

From WL
Nextdoor



Timm Davis Sunset
from Big Bald



Kim
Ranostaj
from WLCC



Ada Hall
Sunset

From WL Nextdoor

Rob Simmerman -
bears



Victor Henley -
three bears

Nextdoor — Juli Ka, California Creek

Check out a new group: WNC Organic Gardeners (Madison & North Buncombe Counties)

Everyone who is interested is welcome to join. Here's the link:

<https://nextdoor.com/g/6v42t5t7m>



WLPOA and Village Club Links

The WLPOA website - <https://www.wolflaurelpoa.com/>.

It provides information including the following:

- ◆ WLPOA Committees - https://www.wolflaurelpoa.com/files/ugd/1610a3_4f3f0d4ffafa4ca592a6906d576f5a15.pdf
- ◆ WLPOA / Village Club Office Contact Information - https://www.wolflaurelpoa.com/files/ugd/1610a3_29a20333463f4178815950ef6baofdd4.pdf
- ◆ Where to go for Assistance - https://www.wolflaurelpoa.com/files/ugd/1610a3_4doa8883e8ca4f03a3c692bea8d72567.pdf
- ◆ Welcome to Wolf Laurel - https://www.wolflaurelpoa.com/files/ugd/1610a3_9a2387acc7594523b92091ac8af219c8.pdf
- ◆ WLPOA and Village Club Benefits - https://www.wolflaurelpoa.com/files/ugd/1610a3_2d9d49d267ca4558bf15844890c186ba.pdf
- ◆ Wolf Laurel on the Internet - https://www.wolflaurelpoa.com/files/ugd/1610a3_9b1b79531b5847d8833c88b069186e62.pdf



TOB Advertisers

Pages 42-52

Click on item to navigate to page

◇ <u>Affordable Tree Care</u>	<u>42</u>
◇ <u>Wolf's Corner Plaza, LLC</u>	<u>44</u>
◇ <u>Wolf's Corner Spring Fling!</u>	<u>45</u>
◇ <u>Precision Restoration Services.....</u>	<u>46</u>
◇ <u>Wolf Mountain Realty</u>	<u>47</u>
◇ <u>Mike Whitt Maintenance</u>	<u>48</u>
◇ <u>Bailey Mt Home Fitness</u>	<u>48</u>
◇ <u>Jay Dawes Construction.....</u>	<u>49</u>
◇ <u>Akut-Abuv</u>	<u>50</u>
◇ <u>Branden Smith Landscaping & Hardscaping.....</u>	<u>51</u>
◇ <u>Hill's Plumbing</u>	<u>52</u>
◇ <u>Inner Wolf Retreat Space</u>	<u>53</u>

Bold indicates new listing

TOB Advertising Information...54

Thank You! to our Advertisers

Affordable Tree Care

◆ Free Estimates

4.8 ★★★★★

(102 Ratings & Reviews)

◆ Same-Day Response

◆ Over 13 Years of Experience

Serving the High Country and Western North Carolina

(828) 832-0165, (828) 208-3935

<https://www.affordabletreecarewnc.com/>

Tree Removal

Brush Removal

Stump Grinding

Lot & View Clearing

Crane Removal Service

Bucket Truck Service

Stump Cleanup



20 Wolf Laurel Road, Mars Hill, NC 28754

Shannon E. Bryan 828.776.7244 Leasing Office Suites

Mars Mini Trucks, LLC

John Wilcox Suite #1 865.771.1797

Specializing in Kei Trucks, Mini Trucks, Right Hand Drive, Import & Used Cars.

<https://www.marsminitrucks.com>

Carolina Mountain Homes Agency

Bobbie Holt Suite #2 772.538.9093

Specializing in Wolf Laurel homes.

Bobbie@CMH.Agency

CarolinaMountainHomesAgency.com

Mountain Laurel Accounting Solutions

Teresa Wilcox Suite #4 828.450.9780

Specializing in small business accounting with 25 years of experience.

<https://www.facebook.com/mountain.laurel.accounting.solutions>

40 Wolf Laurel Road, Mars Hill, NC 28754

Wolf Provisions, LLC

Charlie Snook 40 Wolf Laurel Road 828.380.5808

Offering Groceries, Gifts, Housewares, Coffee, Ice Cream and more.

<https://www.facebook.com/wolfprovisions>

60 Wolf Laurel Road, Mars Hill, NC 28754

Boundless Body Message & Movement, LLC

Jennifer Brown 60 Wolf Laurel Road 828.689.9110

Day Spa...Therapeutic Massages, Skin & Nail care, Waxing and Reiki Healing.

vagar.com/boundlessbodymassageandmovementllc

<https://www.facebook.com/boundlessbody.lmt>

Carrie Lee Hoffman RE/MAX Executive 828.712.5432

Whether Buying or Selling, I'm dedicated to assisting you with your **Wolf Laurel Resort** or Surrounding areas Real Estate needs!

<https://carrieehoffman.remax.com/>

Spring Fling

Open House

Hosted by Wolf's Corner Plaza

Enjoy food, drinks and live music by
The Eclectic Mountain Boys

June 1st • 12pm-4pm

20 Wolf Laurel Rd • Mars Hill NC 28754

Carrie Lee Hoffman with RE/MAX Executive

Will be handing out goodie bags for kids. Guests can also enter to win a Deluxe Tub at Hot Springs.

Bobbie Holt-Carolina Mountain Homes

Will be handing out draw string backpacks and water bottles.

Mountain Laurel Accounting

Will be offering a \$50 gift certificate.

Boundless Body Massage

Will be offering goodie bags, free chair massage, skin analysis and product suggestions. Guests can also enter to win a free 60 minute massage or facial!

Wolf Provisions

Will be giving away free drip coffee and cupcakes. Guests can also enter their name in a drawing for Wolf Provisions gift cards.

Mars Mini Trucks

Will be offering 4 wheeling mini truck rides to and from the Appalachian trail.



PRECISION RESTORATION SERVICES

**WATER, FIRE, SMOKE, STORM DAMAGE
& MOLD REMEDIATION SPECIALISTS**

***Proudly serving the Wolf Laurel
Community***

for 22 years

24/7 Emergency Services

prs2restore.com

828-645-4546





Wolf Laurel Specialists - Our 29th Year!

Family Owned - Open 6 days/week

Full Property Management Services

Long and Short Term Rental Programs



Dinah Carver

WolfMountainRealty.com

828 680 9777

383 Wolf Laurel Rd

Mars Hill, NC 28754

1/4 Mile from the Security Gate



Connie Carver





Mike Whitt Maintenance

- ◆ Home-watch Service
- ◆ Plumbing Repairs
- ◆ Basic Maintenance
- ◆ Home Winterizations
- ◆ VRBO Services

828-208-1431

drumminmike@yahoo.com

Year-round resident



- Certified Personal Training •
- Flexible Scheduling •
- Great For Seniors •
- No Contracts •

SPRING SPECIAL:

Get started today for just \$50!

CONVENIENT AT-HOME PERSONAL TRAINING

BAILEYMTNHOMEFITNESS@GMAIL.COM

📷 @BAILEYMTNHOMEFITNESS



Preservation, Restoration & Remodeling

Historic Preservation & Restoration

Barns

- Cabins
- Structures & Structural Framing

Complete Home Remodeling

- Kitchen
- Bathroom
- Basement

Handyman Services

- Doors and Windows
- Drywall & Painting
- Maintenance & Repair
- Minor Plumbing, Electrical, & HVAC

Serving Western NC

**We're building
relationships not just
Structures.**

<https://jaydawes.com>

jay@jaydawes.com

Text for faster service:

828-808-2469

Build with US

**Madison County Chamber
of Commerce Member**

'Cover The Mountain'

Akut-Abuv

PROFESSIONAL PAINT SERVICE

TREE SERVICE, LANDSCAPING
DRIVE THRU NURSERY:
HWY. 19 E, BURNSVILLE



DRIVEWAY: SEALING, PAVING,
PAVER & REPAIR SERVICE

828-208-5285

LEE PETERSON

akut_abuv@hotmail.com



BRENDAN SMITH

LANDSCAPING & HARDSCAPING



- * **Garden Design and maintenance**
- * **Dry Stack Masonry**
- * **Mortar Repair**
- * **Weeding Mulch**
- * **Trail Work**
- * **Drainage**



Patios, Pathways, Walls

Call 828-674-4185



Frame your
home with
enduring
quality!



**Commercial - Residential
Repair
Class 1 License**



828-689-5092

John Hill, Owner
828-689-5092



"Professional Service with Quality Results"
Serving Western North Carolina for over 30 Years

First Time
Special for
Our Neighbors:
Buy One,
Get One Free
WELCOMEWOLF



A Sound Healing Retreat
feed your inner wolf

Come see us!



INNER WOLF RETREAT SPACE

For Sound Healing and A Return to Nature IN WOLF LAUREL

- **WEEKLY Sound Healing Sessions**

Try something new

**with unique musical instruments like singing bowls
and gongs to help relax, reset your system, and
quiet the mind**

- **Check Website for Special Events with**

- **Yoga, Cacao, Nature**

- **We support you in slowing down, connecting
with your Self and Others, & living your purpose**

www.innerwolfretreatspace.com

808-348-6690

Advertising Information For 2024 TOBs

- 1) Additional TOB editions are scheduled to be published on the first of July and November.
- 2) Payment for an Ad in the TOB results in the Ad also being posted on the WLPOA website.
- 3) Ad fees:

Half page: \$75 / edition

Full page: \$85 / edition

Ad designing starts at \$30

- 4) Remit to:

Larry Veatch

5753 Hwy 85 N, PMB #4427

or [PayPal.Me/larryv8](https://www.paypal.com/paytoemail/larryv8)



For Ad space and information contact
Larry Veatch at larryv8@gmail.com
or 352-359-0071

Thank you for your service to the Wolf Laurel community.

